

APP CRS	Rwy Idg	<b>4239</b>
<b>054°</b>	TDZE	<b>821</b>
	Apt Elev	<b>833</b>

# RNAV (GPS) RWY 5

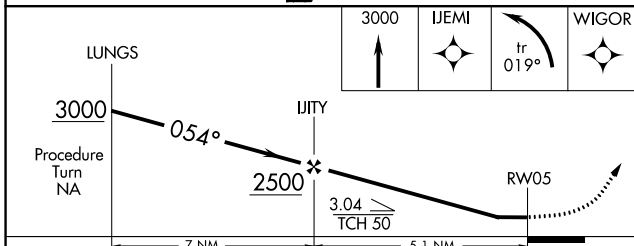
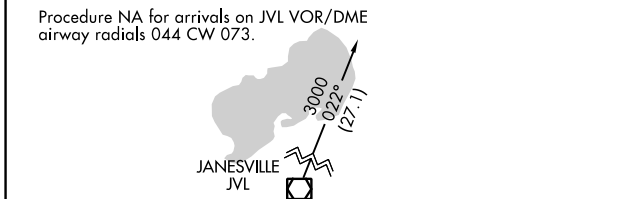
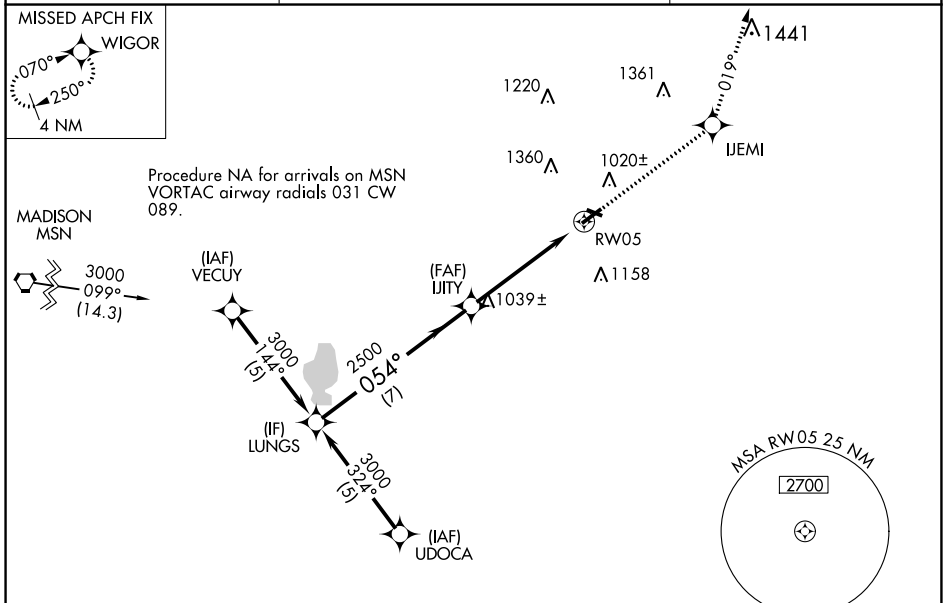
WATERTOWN MUNI (RYV)

RNP APCH.

▼ Rwy 5 helicopter visibility reduction below 3/4 SM NA. When local altimeter setting not received, use Dodge County altimeter setting and increase all MDAs 60 feet, increase LNAV Cat C visibility 1/8 SM. Circling Rwy 23 NA at night.

MISSED APPROACH: Climb to 3000 direct IJEMI and left turn on 019° track to WIGOR and hold.

AWOS-3 <b>119.975</b>	MADISON APP CON * <b>119.15 343.7</b>	UNICOM <b>122.8 (CTAF)</b>
--------------------------	--	-------------------------------



ELEV 833	<b>D</b>	TDZE 821
----------	----------	----------

2801 X 75

0.4% UP

4429 X 75

054°

REIL Rwy 5 and 23

MIRL Rwy 5-23 and 11-29

CATEGORY	A	B	C	D
LNAV MDA	1440-1	619 (700-1)	1440-1 3/4 619 (700-1 3/4)	1440-2 619 (700-2)
CIRCLING	1440-1	607 (700-1)	1720-2 3/4 887 (900-2 3/4)	1720-3 887 (900-3)

EC-3, 05 SEP 2024 to 03 OCT 2024

EC-3, 05 SEP 2024 to 03 OCT 2024