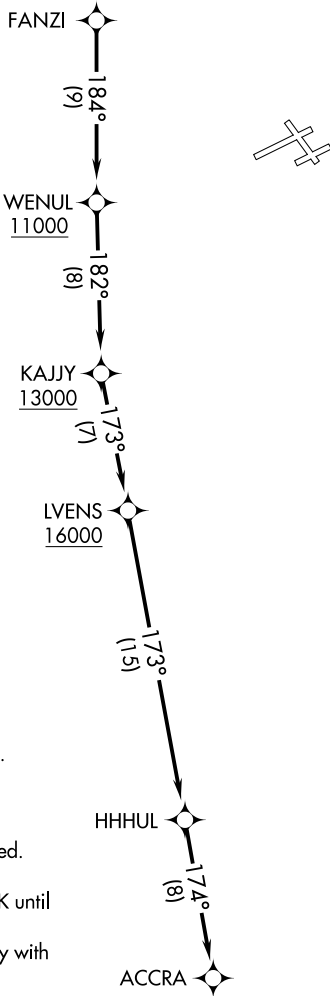


ATIS  
127.175  
CLNC DEL  
121.875  
118.6 (When twr closed)  
GND CON  
121.875  
MILWAUKEE DEP CON  
135.875 317.725

TOP ALTITUDE:  
ASSIGNED BY ATC



TAKEOFF MINIMUMS  
Rwys 7L/R, 15, 25L/R, 33: Standard.

- NOTE: RNAV 1.  
NOTE: GPS or DME/DME/IRU required.  
NOTE: RADAR required.  
NOTE: Turbojet aircraft maintain 250K until advised by ATC.  
NOTE: Advise ATC if unable to comply with crossing restrictions.

NOTE: Chart not to scale.

DEPARTURE ROUTE DESCRIPTION

Climb on assigned heading for RADAR vectors to FANZI, thence....  
....on track 184° to cross WENUL at or above 11000, then on track 182° to cross KAJJY at or above 13000, then on track 173° to cross LVENS at or above 16000, then on track 173° to HHHUL, then on track 174° to ACCRA. Maintain ATC assigned altitude, expect filed altitude ten minutes after departure.