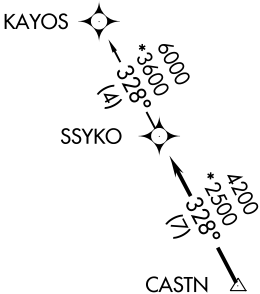
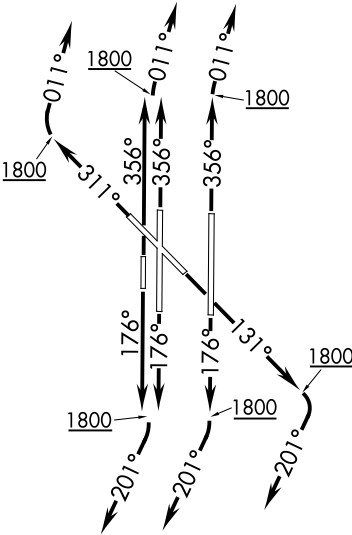


D-ATIS 125.85  
CLNC DEL  
124.35  
GND CON  
121.9 348.6  
ROGERS TOWER  
119.35 269.45  
OKE CITY DEP CON  
124.2 336.4



TOP ALTITUDE:  
ASSIGNED BY ATC

TAKEOFF MINIMUMS:  
Rwys 13, 17L/R, 18, 31, 35L/R, 36:  
Standard with minimum climb of 500'  
per NM to 1800.



NOTE: RADAR required.  
NOTE: DME/DME/IRU or GPS required.  
NOTE: RNAV 1.

NOTE: Chart not to scale.

▼

DEPARTURE ROUTE DESCRIPTION

TAKEOFF RWY 13: Climb heading 131° to 1800, then right turn heading 201° or as assigned by ATC, expect RADAR vectors to CASTN, thence . . .

TAKEOFF RWY 17L/R, 18: Climb heading 176° to 1800, then right turn heading 201° or as assigned by ATC, expect RADAR vectors to CASTN, thence . . .

TAKEOFF RWY 31: Climb heading 311° to 1800, then right turn heading 011° or as assigned by ATC, expect RADAR vectors to CASTN, thence . . .

TAKEOFF RWY 35L/R, 36: Climb heading 356° to 1800, then right turn heading 011° or as assigned by ATC, expect RADAR vectors to CASTN, thence . . .

. . . on track 328° to SSYKO, then on (transition). Maintain 5000 or as assigned by ATC. Expect filed altitude 10 minutes after departure.

KAYOS TRANSITION (SSYKO3.KAYOS):