

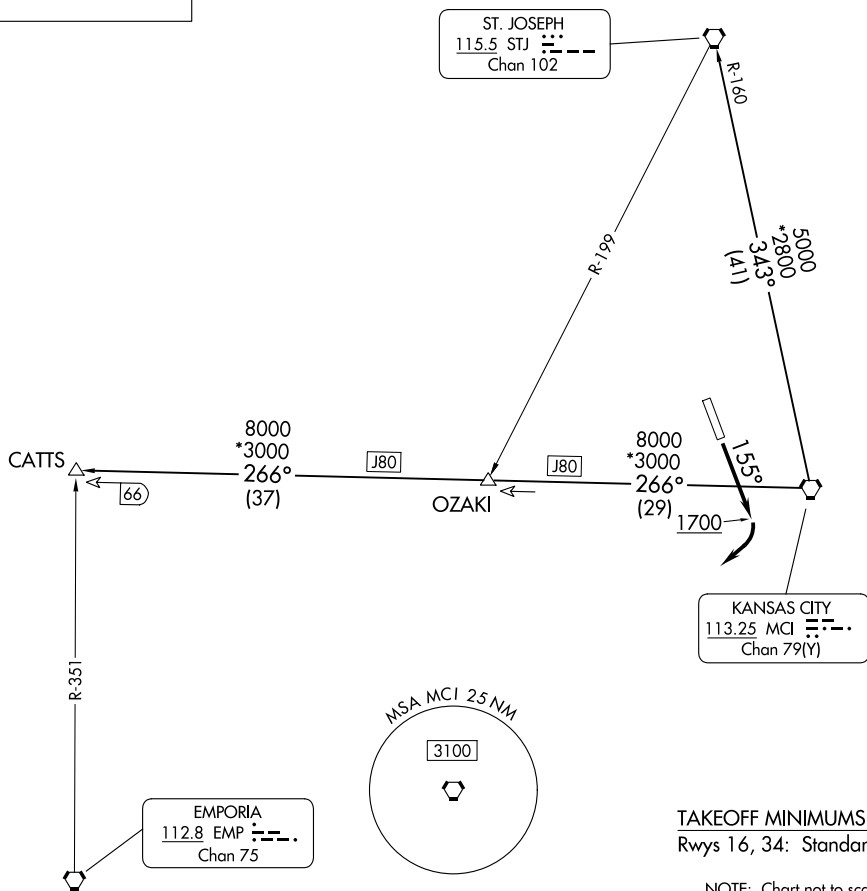
CHIEF NINE DEPARTURE

SHERMAN AAF (FLV)  
FORT LEAVENWORTH, KANSAS

**TOP ALTITUDE:**  
10000

RADAR required.

KANSAS CITY DEP CON  
124.7 284.7



TAKEOFF MINIMUMS  
Rwys 16, 34: Standard.

NOTE: Chart not to scale.

## DEPARTURE ROUTE DESCRIPTION

**TAKEOFF RUNWAY 16:** Climb on heading 155° to 1700 before turning southwest, thence. . . .climb on assigned heading for RADAR vectors to appropriate route. Maintain 10000 or as assigned by ATC, expect filed altitude 10 minutes after departure.

TAKEOFF RUNWAY 34: Climb on assigned heading for RADAR vectors to appropriate route. Maintain 10000 or as assigned by ATC, expect filed altitude 10 minutes after departure.

CATTS TRANSITION (CHIEF9.CATTS): From over MCI VORTAC on MCI R-266 to CATTS.

ST. JOSEPH TRANSITION (CHIEF9.STJ): From over MCI VORTAC on MCI R-343 and STJ R-160 to STJ VORTAC.

## CHIEF NINE DEPARTURE

(CHIEF9.MCI) 05OCT23

FORT LEAVENWORTH, KANSAS  
SHERMAN AAF (FLV)

NC-2, 16 MAY 2024 to 13 JUN 2024