

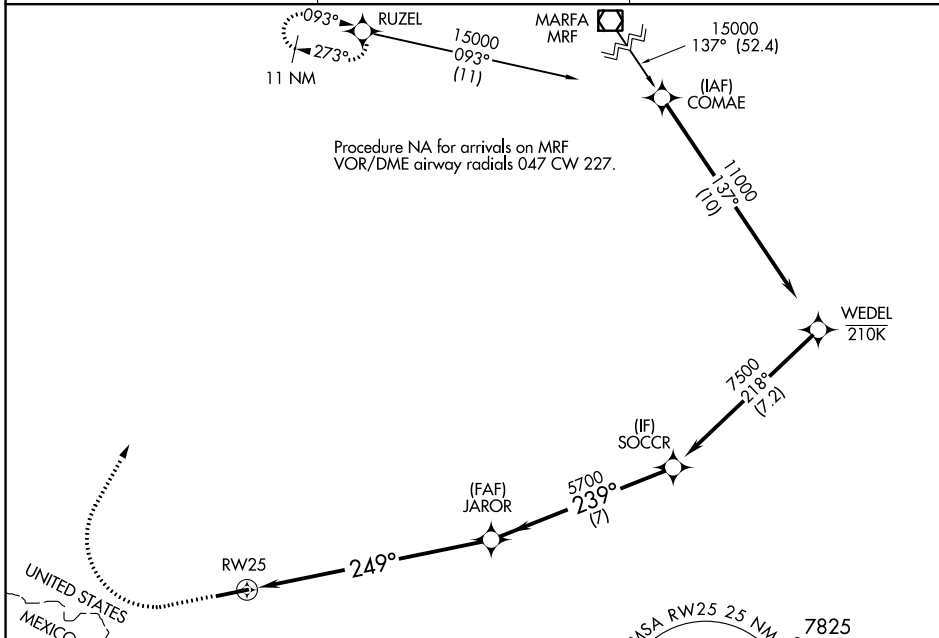
WAAS CH 71055 W25A	APP CRS 249°	Rwy Idg TDZE Apt Elev	6501 2628 2630
--	------------------------	-----------------------------	---

RNAV (GPS) Z RWY 25

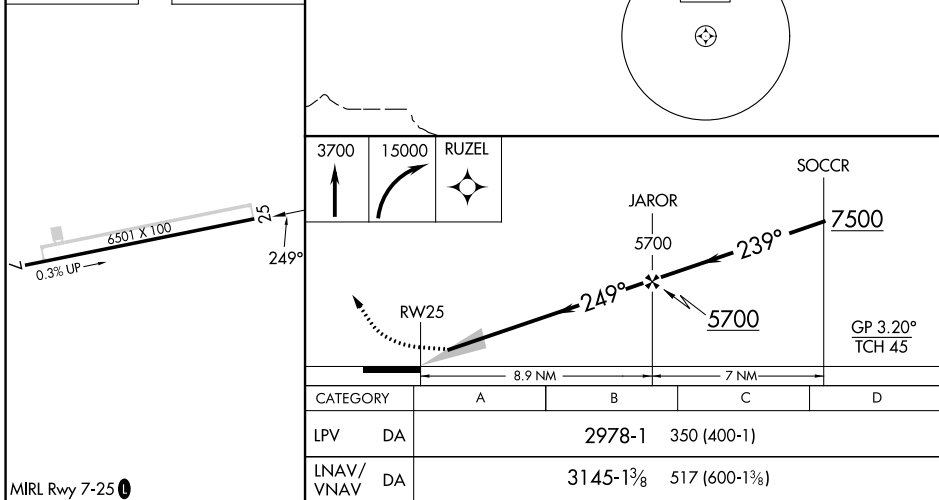
LAJITAS INTL (T89)

RNP APCH - GPS. MISSED APPROACH: Climb to 3700 then climbing right turn to 15000 direct RUZEL and hold, continue climb-in-hold to 15000.
 For uncompensated Baro-VNAV systems, LNAV/VNAV NA below -20°C or above 54°C. When local altimeter setting not received, procedure NA. MISSED APPROACH requires minimum climb of 383 feet per NM to 5060, if unable to meet climb gradient, see RNAV (GPS) Y RWY 25.

AWOS-3 119.275	ALBUQUERQUE CENTER 135.875 292.15	UNICOM 122.7 (CTAF)
--------------------------	---	-------------------------------



ELEV 2630	TDZE 2628
-----------	-----------



MIRL Rwy 7-25

LAJITAS, TEXAS
Orig 26DEC24

29°17'N-103°41'W

LAJITAS INTL (T89)
RNAV (GPS) Z RWY 25

SC-3, 26 DEC 2024 to 23 JAN 2025

SC-3, 26 DEC 2024 to 23 JAN 2025