

WAAS CH <b>72456</b> <b>W25B</b>	APP CRS <b>249°</b>	Rwy Idg TDZE Apt Elev	<b>6501</b> <b>2628</b> <b>2630</b>
--	------------------------	-----------------------------	---

# RNAV (GPS) Y RWY 25

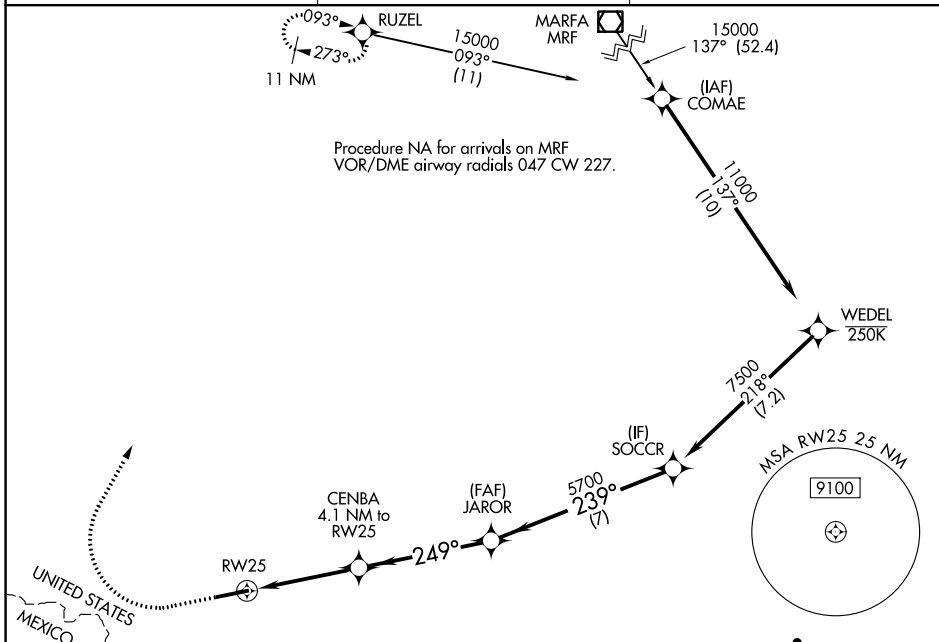
LAJITAS INTL (T89)

RNP APCH - GPS.

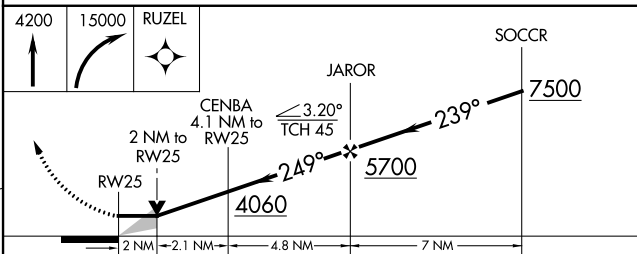
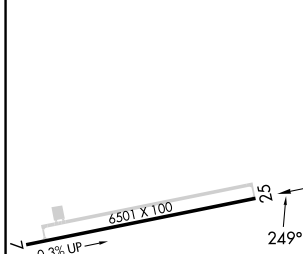
MISSED APPROACH: Climb to 4200 then climbing right turn to 15000 direct RUZEL and hold, continue climb-in-hold to 15000.  
 \*MISSED APPROACH requires minimum climb of 237 feet per NM to 5800.

⚠ Circling NA south of Rwy 7-25. When local altimeter setting not received, procedure NA.  
⚠ Procedure NA for arrivals on MRF VOR/DME airway radials 047 CW 227.

AWOS-3 <b>119.275</b>	ALBUQUERQUE CENTER <b>135.875 292.15</b>	UNICOM <b>122.7 (CTAF)</b> <b>0</b>
--------------------------	---	--



ELEV 2630	TDZE 2628
-----------	-----------



CATEGORY	A	B	C	D
*LP MDA	3340-1 712 (800-1)		3340-2 712 (800-2)	
*LNAV MDA	3420-1 792 (800-1)	3420-1¼ 792 (800-1¼)	3420-2½ 792 (800-2½)	
LP MDA	3760-1¼ 1132 (1200-1¼)	3760-1½ 1132 (1200-1½)	3760-3 1132 (1200-3)	
LNAV MDA	4020-1¼ 1392 (1400-1¼)	4020-1½ 1392 (1400-1½)	4020-3 1392 (1400-3)	
CIRCLING	4020-1¼ 1390 (1400-1¼)	4020-1½ 1390 (1400-1½)	4020-3 1390 (1400-3)	4180-3 1550 (1600-3)

MIRL Rwy 7-25 **0**

# RNAV (GPS) Y RWY 25

LAJITAS INTL (T89)

SC-3, 26 DEC 2024 to 23 JAN 2025

SC-3, 26 DEC 2024 to 23 JAN 2025