

WAAS CH 65648 W19A	APP CRS 188°	Rwy Idg 6100 TDZE 5049 Apt Elev 5065
--	------------------------	---

RNAV (GPS) RWY 19

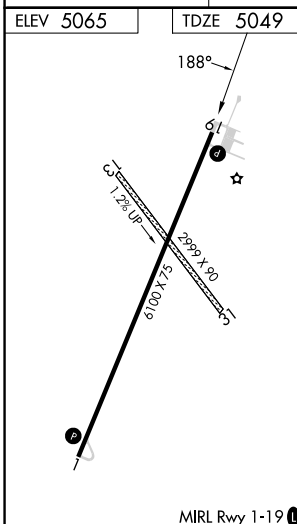
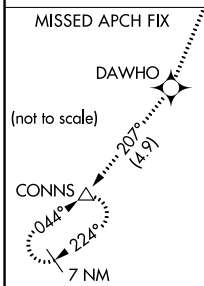
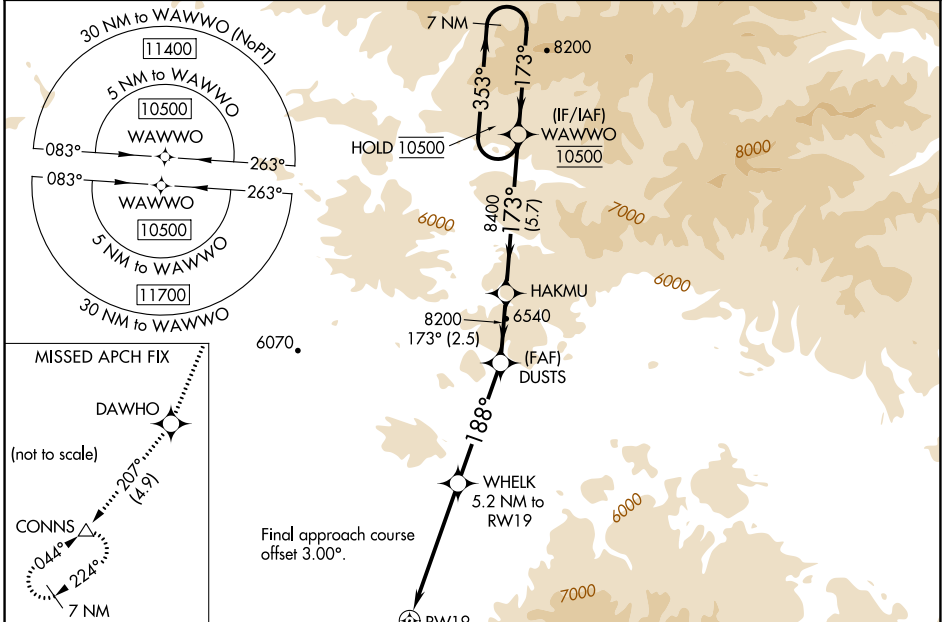
WHITE SULPHUR SPRINGS (7S6)

RNP APCH - GPS.

⚠ For uncompensated Baro-VNAV systems, LNAV/VNAV NA below -25°C or above 54°C. Rwy 19 helicopter visibility reduction below ¾ SM NA. Circling NA to Rwys 13 and 31. Circling NA for Cats C and D east of Rwy 1-19. Circling NA for all Cats east of Rwy 1-19 at night.

MISSED APPROACH: Climb to 5700 then climb to 10000 direct DAWHO and on track 207° to CONNS and hold, continue climb-in-hold to 10000.

AWOS-3PT 118.525	SALT LAKE CENTER 133.4 285.4	CTAF 122.9
----------------------------	--	----------------------



ELEV 5065	TDZE 5049	5700		10000	DAWHO	tr 207°	CONNS	WAWWO	
		WHEK		DUSTS		HAKMU		7 NM Holding Pattern	
		RWY 19		8200		8400		353°	
		6740		8200				173°	
		2.5 NM		2.7 NM		4.6 NM		2.5 NM	
		2.5 NM		2.5 NM		5.7 NM			
CATEGORY	A	B	C	D					
LPV DA	5415-1				366 (400-1)				
LNAV/VNAV DA	5495-1 3/8				446 (500-1 3/8)				
LNAV MDA	5880-1	5880-1 1/4	5880-2 1/2	831 (900-2 1/2)					
	831 (900-1)	831 (900-1 1/4)							
CIRCLING	5880-1 1/4	5920-1 1/4	5920-2 1/2	5920-2 3/4					
	815 (900-1 1/4)	855 (900-1 1/4)	855 (900-2 1/2)	855 (900-2 3/4)					

NW-1, 31 OCT 2024 to 28 NOV 2024

NW-1, 31 OCT 2024 to 28 NOV 2024