

NORFOLK, VIRGINIA

# COPTER TACAN 310

TACAN NGU Chan <b>86(Y)</b>	APCH CRS <b>130°</b>	Rwy Idg TDZE Arpt Elev	<b>N/A</b> <b>N/A</b> <b>10</b>
--------------------------------	-------------------------	------------------------------	---------------------------------------

[USN]

NORFOLK NS HELIPORT (KNHU)

<p>▼ Circling not authorized S of H2.</p>	<p>MISSED APPROACH: Climbing left turn to 3000 to intercept NGU TACAN R-053 to GLEEP and hold.</p>
---	--

<p>CHAMBERS TOWER <b>124.3 379.15</b></p>	<p>NAVY NORFOLK HEL TOWER <b>126.375 290.5</b></p>	<p>GND CON <b>298.95</b></p>
---	--	----------------------------------

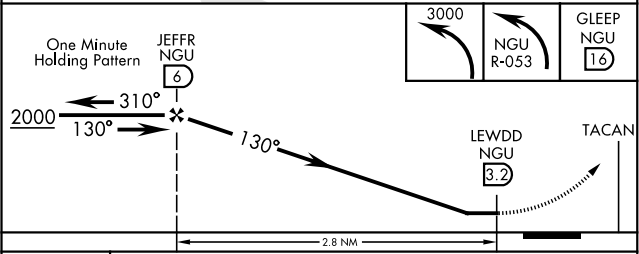
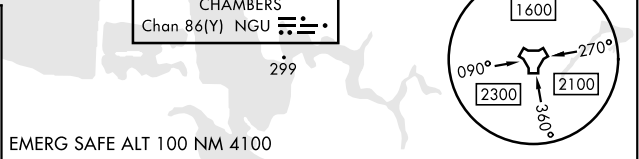
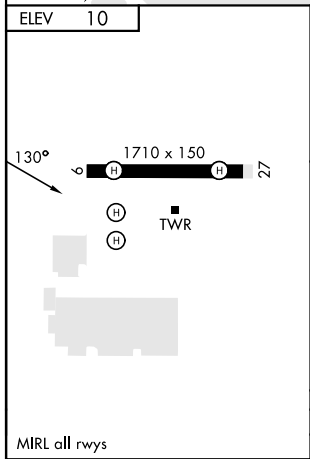
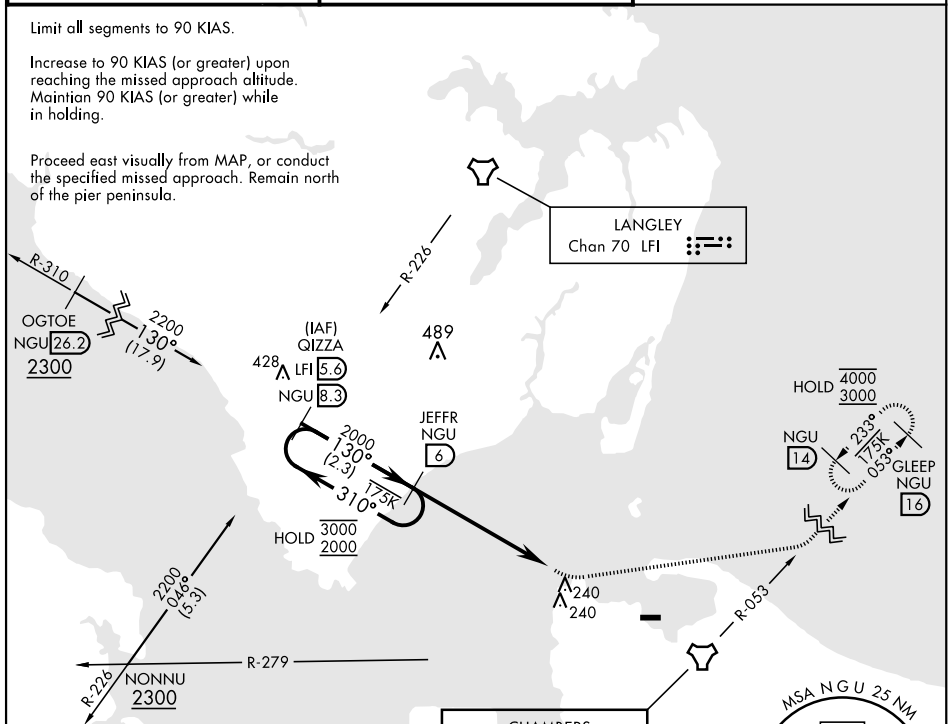
Limit all segments to 90 KIAS.

Increase to 90 KIAS (or greater) upon reaching the missed approach altitude. Maintain 90 KIAS (or greater) while in holding.

Proceed east visually from MAP, or conduct the specified missed approach. Remain north of the pier peninsula.

NE-3, 31 OCT 2024 to 28 NOV 2024

NE-3, 31 OCT 2024 to 28 NOV 2024



CATEGORY	COPTER	
<input checked="" type="checkbox"/> CIRCLING	540-1 $\frac{7}{8}$	530 (600-1 $\frac{7}{8}$ )

NORFOLK, VIRGINIA

Orig 30NOV23

36°57'N - 76°18'W

NORFOLK NS HELIPORT (KNHU)

# COPTER TACAN 310