

APP CRS	Rwy Idg	5002
320°	TDZE	301
	Apt Elev	301

RNAV (GPS) RWY 32

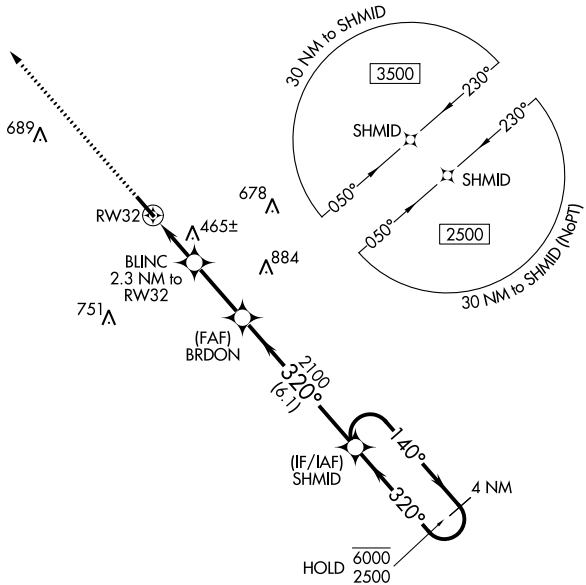
FRANKLIN FLD (Ø7A)

RNP APCH - GPS.

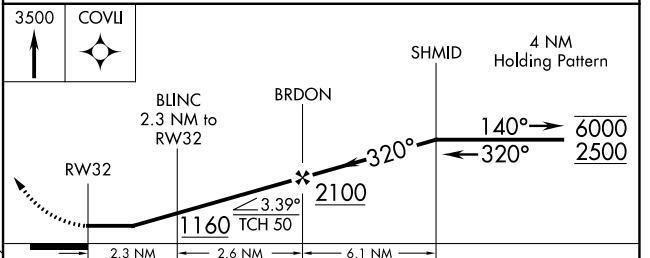
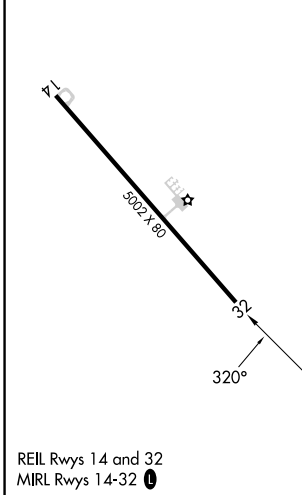
NA Rwy 32 helicopter visibility reduction below 1 SM NA. Procedure NA at night. Use Troy altimeter setting.

MISSED APPROACH: Climb to 3500 direct COVLI and hold.

TOI ASOS 120.925	MONTGOMERY APP CON * 121.2 269.05	UNICOM 122.8 (CTAF) Ø
----------------------------	---------------------------------------------	----------------------------------------



ELEV 301	TDZE 301
----------	----------



CATEGORY	A	B	C	D
LNAV MDA	780-1	479 (500-1)	780-1 $\frac{3}{8}$	479 (500-1 $\frac{3}{8}$)
CIRCLING	840-1	539 (600-1)	900-1 $\frac{1}{2}$ 599 (600-1 $\frac{1}{2}$)	1060-2 $\frac{1}{2}$ 759 (800-2 $\frac{1}{2}$)

SE-4, 31 OCT 2024 to 28 NOV 2024

SE-4, 31 OCT 2024 to 28 NOV 2024