

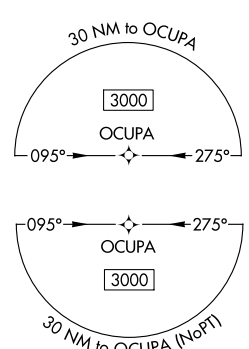
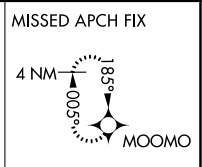
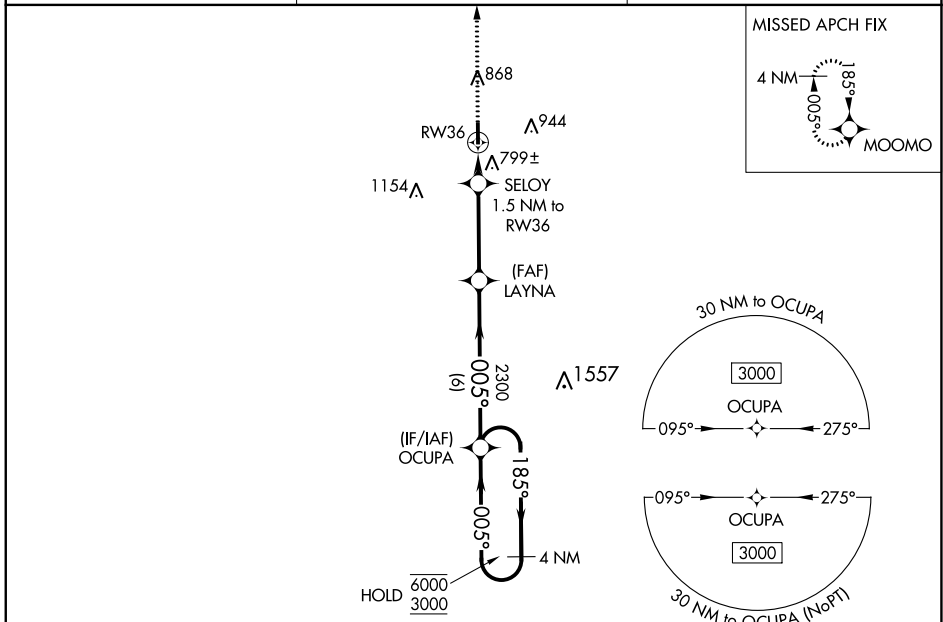
WAAS CH <b>70744</b> <b>W36A</b>	APP CRS <b>005°</b>	Rwy Idg TDZE Apt Elev	<b>4001</b> <b>671</b> <b>671</b>
--	------------------------	-----------------------------	---

# RNAV (GPS) RWY 36

DELPHI MUNI (I19)

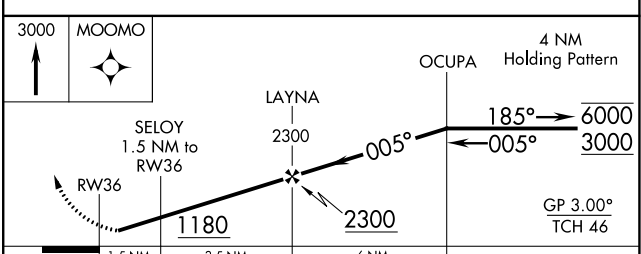
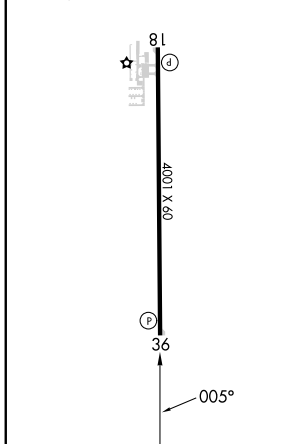
RNP APCH - GPS.	MISSED APPROACH: Climb to 3000 direct MOOMO and hold.
<p>▼ When Circling to Rwy 18 at night, operational VGS1 required, remain on or above VGS1 glidepath until threshold. Rwy 36 helicopter visibility reduction below 3/4 SM NA. Baro-VNAV NA. Use Monticello altimeter setting.</p> <p>▲ NA</p>	

MCX AWOS-3P <b>124.05</b>	GRISSOM APP CON* <b>121.05 338.275</b>	CTAF <b>122.9</b>
------------------------------	---	----------------------



ELEV 671	TDZE 671
----------	----------

MIRL Rwy 18-36  
REIL Rwy 18 and 36



CATEGORY	A	B	C	D
LPV DA	948-1	277 (300-1)		NA
LNAV/VNAV DA	1089-1 1/8	418 (500-1 1/8)		NA
LNAV MDA	1080-1	409 (500-1)		NA
CIRCLING	1140-1 469 (500-1)	1220-1 549 (600-1)		NA

EC-2, 08 AUG 2024 to 05 SEP 2024

EC-2, 08 AUG 2024 to 05 SEP 2024