

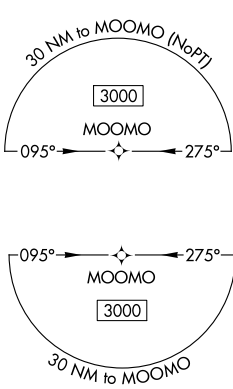
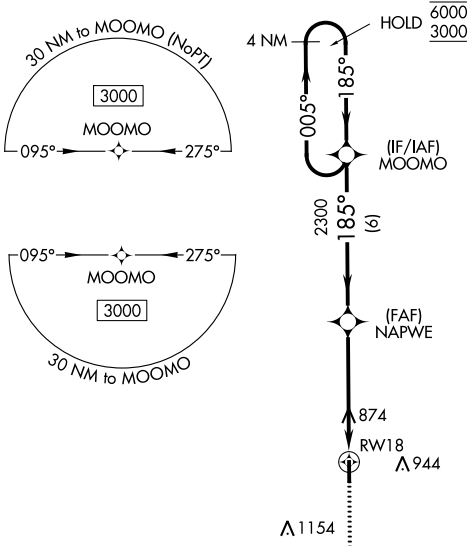
APP CRS	Rwy Idg	<b>4001</b>
<b>185°</b>	TDZE	<b>671</b>
	Apt Elev	<b>671</b>

# RNAV (GPS) RWY 18

DELPHI MUNI (I19)

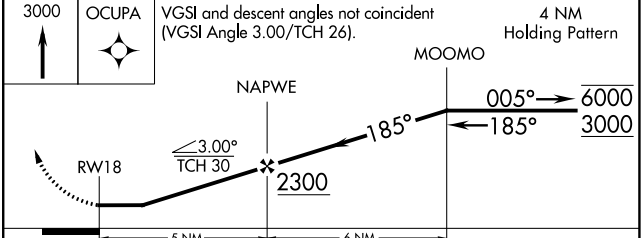
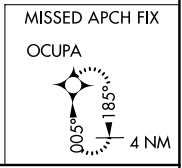
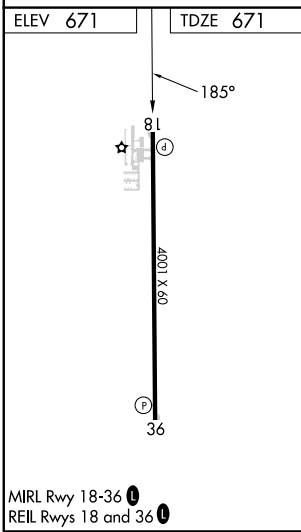
RNP APCH - GPS.	MISSED APPROACH: Climb to 3000 direct OCUPA and hold.
<p><b>▼</b> Rwy 18 helicopter visibility reduction below 1 SM NA.</p> <p><b>▲</b> NA Use Monticello altimeter setting. Procedure NA at night.</p>	

MCX AWOS-3P <b>124.05</b>	GRISSOM APP CON* <b>121.05 338.275</b>	CTAF <b>122.9</b> <b>0</b>
------------------------------	---	-------------------------------



EC-2, 03 OCT 2024 to 31 OCT 2024

EC-2, 03 OCT 2024 to 31 OCT 2024



OCUPA	VGSI and descent angles not coincident (VGSI Angle 3.00/TCH 26).			
	MOOMO			4 NM Holding Pattern
	NAPWE		RWY 18	
	2300		005° → 6000 / ← 185° 3000	
	5 NM		6 NM	
CATEGORY	A	B	C	D
LNAV MDA	1160-1 489 (500-1)		NA	
CIRCLING	1160-1 489 (500-1)	1220-1 549 (600-1)	NA	