

WAAS CH <b>61241</b> <b>W34A</b>	APP CRS <b>347°</b>	Rwy Idg <b>4201</b> TDZE <b>4133</b> Apt Elev <b>4138</b>
--	------------------------	---

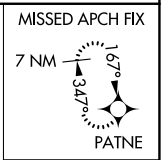
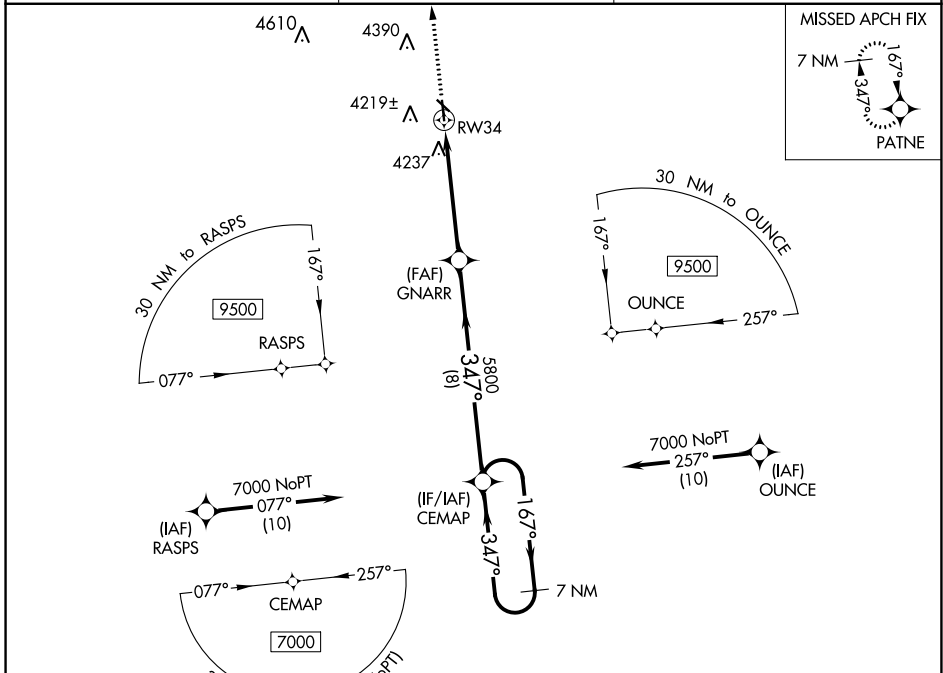
# RNAV (GPS) RWY 34

YUMA MUNI (2V6)

**⚠** Circling NA to Rwsys 12 and 30. For uncompensated Baro-VNAV Systems, LNAV/VNAV NA below -23°C (-9°F) or above 54°C (130°F), DME/DME RNP-0.3 NA.

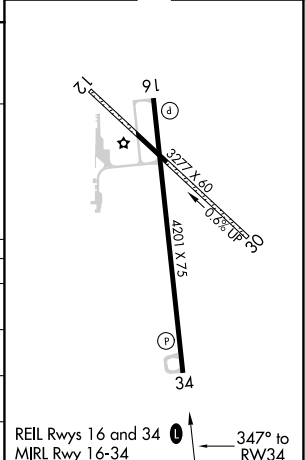
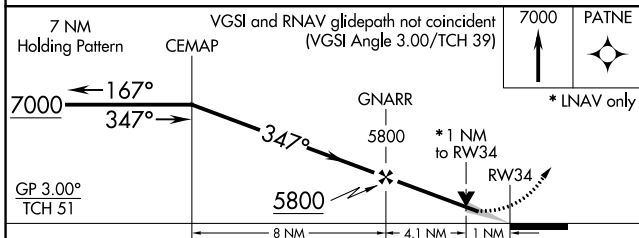
MISSED APPROACH: Climb to 7000 direct PATNE and hold.

AWOS-3 <b>135.375</b>	DENVER CENTER <b>133.95 317.55</b>	UNICOM <b>122.8 (CTAF)</b> <b>0</b>
--------------------------	---------------------------------------	--



⚠4811±

ELEV	4138	TDZE	4133
------	------	------	------



CATEGORY	A	B	C	D
LPV DA	4333-1	200 (200-1)		NA
LNAV/VNAV DA	4383-1	250 (300-1)		NA
LNAV MDA	4500-1	367 (400-1)		NA
<b>C</b> CIRCLING	4620-1 482 (500-1)	4640-1 502 (600-1)	4700-1½ 562 (600-1½)	NA

SW-1, 28 NOV 2024 to 26 DEC 2024

SW-1, 28 NOV 2024 to 26 DEC 2024