

WAAS CH <b>41250</b> <b>W18A</b>	APP CRS <b>177°</b>	Rwy Idg TDZE <b>1711</b> Apt Elev <b>1711</b>	<b>6064</b>
--	------------------------	---	-------------

# RNAV (GPS) Y RWY 18

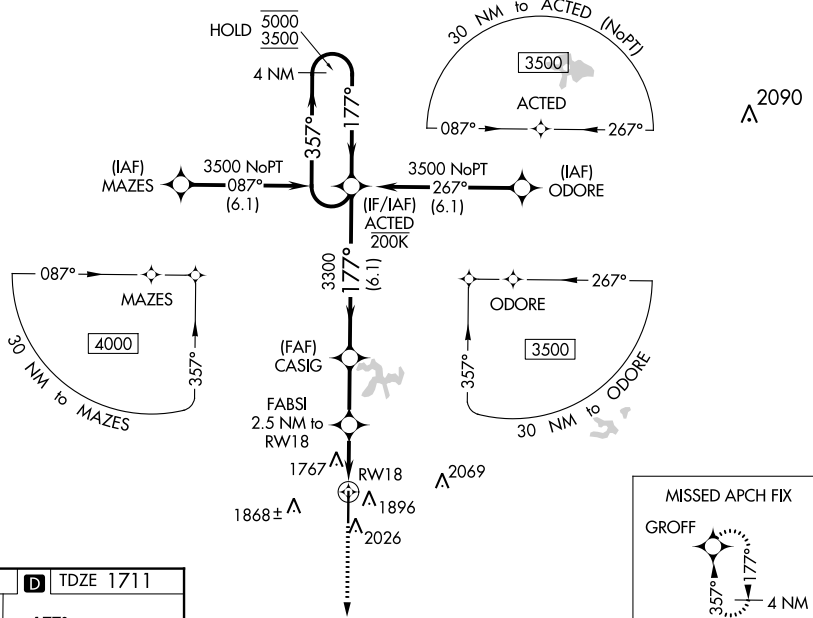
GREGORY M SIMMONS MEML (GZLN)

RNP APCH - GPS.

**⚠** Circling NA east of Rwy 18-36. Baro-VNAV and VDP NA when using Eastland altimeter setting. For uncompensated Baro-VNAV systems, LNAV/VNAV NA below -18°C or above 54°C. When local altimeter setting not received, use Eastland altimeter setting and increase LPV DA to 2023 feet; increase LNAV/VNAV DA to 2067 feet; increase all MDAs 80 feet and LNAV visibility Cat C/D 3/8 SM. Rwy 18 helicopter visibility reduction below 3/8 SM NA.

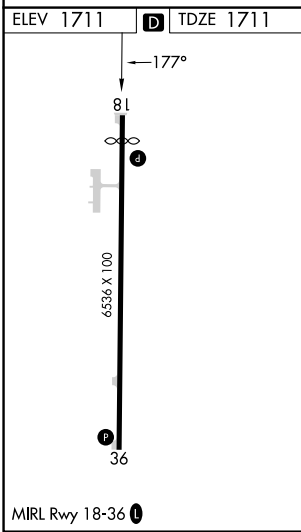
MISSED APPROACH:  
Climb to 3700 direct  
GROFF and hold.

AWOS-4 <b>118.0</b>	ABILENE APP CON <b>125.0 338.3</b>	CTAF <b>122.9</b>
------------------------	---------------------------------------	----------------------



SC-2, 03 OCT 2024 to 31 OCT 2024

SC-2, 03 OCT 2024 to 31 OCT 2024



3700	GROFF	4 NM Holding Pattern		
CASIG	FABSI 2.5 NM to RW18	ACTED		
3300	1 NM to RW18	357° 5000 ←177° 3500		
2540	1 NM 1.5 NM 2.4 NM 6.1 NM	GP 3.00° TCH 45		
CATEGORY	A	B C D		
LPV DA	1961-1	250 (300-1)		
LNAV/VNAV DA	1985-1	274 (300-1)	2005-1 294 (300-1)	
LNAV MDA	2060-1	349 (400-1)	2080-1 369 (400-1)	
CIRCLING	2140-1 429 (500-1)	2180-1 469 (500-1)	2180-1½ 469 (500-1½)	2600-3 889 (900-3)