

(ISN6.ISN) 23334

# WILLISTON SIX DEPARTURE

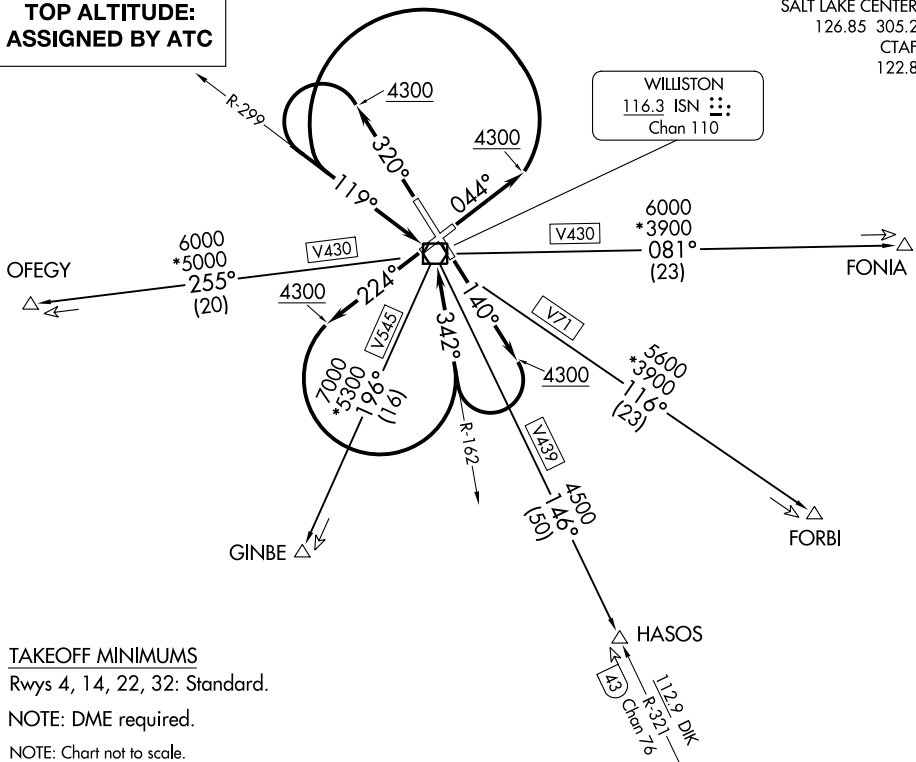
AL-11234 (FAA)

WILLISTON BASIN INTL (XWA)  
WILLISTON, NORTH DAKOTA

**TOP ALTITUDE:  
ASSIGNED BY ATC**

SALT LAKE CENTER  
126.85 305.2  
CTAF  
122.8

WILLISTON  
116.3 ISN  
Chan 110



### TAKEOFF MINIMUMS

Rwys 4, 14, 22, 32: Standard.

NOTE: DME required.

NOTE: Chart not to scale.

### DEPARTURE ROUTE DESCRIPTION

**TAKEOFF RUNWAY 4:** Climb on heading 044° to 4300 then climbing left turn to intercept ISN VOR/DME R-299 to ISN VOR/DME, thence. . . .

**TAKEOFF RUNWAY 14:** Climb on heading 140° to 4300 then climbing right turn to intercept ISN VOR/DME R-162 to ISN VOR/DME, thence. . . .

**TAKEOFF RUNWAY 22:** Climb on heading 224° to 4300 then climbing left turn to intercept ISN VOR/DME R-162 to ISN VOR/DME, thence. . . .

**TAKEOFF RUNWAY 32:** Climb on heading 320° to 4300 then climbing left turn to intercept ISN VOR/DME R-299 to ISN VOR/DME, thence. . . .

. . . .on (transition). Maintain ATC assigned altitude. Expect filed altitude 10 minutes after departure.

**FONIA TRANSITION (ISN6.FONIA):** From over ISN VOR/DME on ISN R-081 to FONIA.

**FORBI TRANSITION (ISN6.FORBI):** From over ISN VOR/DME on ISN R-116 to FORBI.

**GINBE TRANSITION (ISN6.GINBE):** From over ISN VOR/DME on ISN R-196 to GINBE.

**HASOS TRANSITION (ISN6.HASOS):** From over ISN VOR/DME on ISN R-146 and DIK R-321 to HASOS.

**OFEGY TRANSITION (ISN6.OFEGY):** From over ISN VOR/DME on ISN R-255 to OFEGY.

# WILLISTON SIX DEPARTURE

(ISN6.ISN) 17JUN21

WILLISTON, NORTH DAKOTA  
WILLISTON BASIN INTL (XWA)

NC-1, 08 AUG 2024 to 05 SEP 2024