

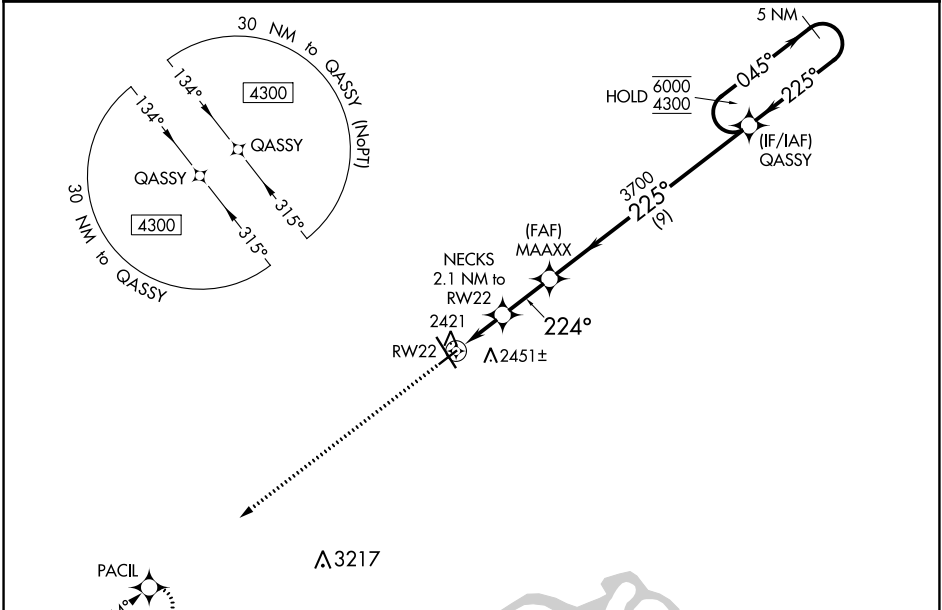
WAAS CH 93943 W22A	APP CRS 224°	Rwy Idg TDZE Apt Elev	4502 2339 2356
--	------------------------	-----------------------------	---

RNAV (GPS) RWY 22

WILLISTON BASIN INTL (XWA)

RNP APCH-GPS.	MISSED APPROACH: Climb to 4300 direct PACIL and hold.
<p>For uncompensated Baro-VNAV systems, LNAV/VNAV NA below -19°C or above 54°C.</p>	

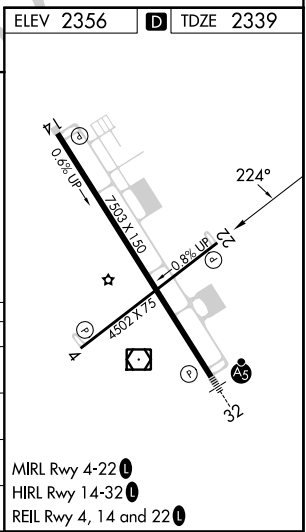
ASOS 125.925	SALT LAKE CITY CENTER 126.85 305.2	UNICOM 122.8 (CTAF)
------------------------	--	-------------------------------



NC-1, 08 AUG 2024 to 05 SEP 2024

NC-1, 08 AUG 2024 to 05 SEP 2024

ELEV 2356	D TDZE 2339
*LNAV only	
CATEGORY	A B C D
LPV DA	2539-1 200 (200-1)
LNAV/VNAV DA	2589-1 250 (300-1)
LNAV MDA	2740-1 401 (400-1) 2740-1 1/8 401 (400-1 1/8)
C CIRCLING	2760-1 2820-1 2820-1 1/2 2920-2 404 (500-1) 464 (500-1) 464 (500-1 1/2) 564 (600-2)



MIRL Rwy 4-22
HIRL Rwy 14-32
REIL Rwy 4, 14 and 22