

APP CRS	Rwy Idg	N/A
165°	TDZE	N/A
	Apt Elev	320

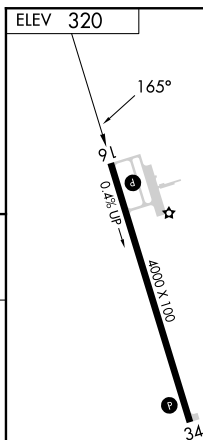
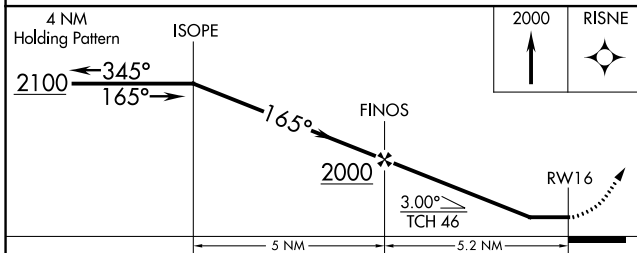
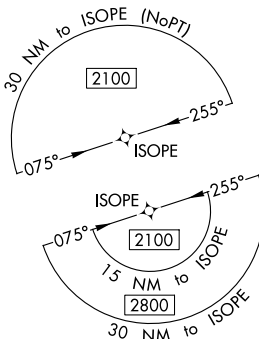
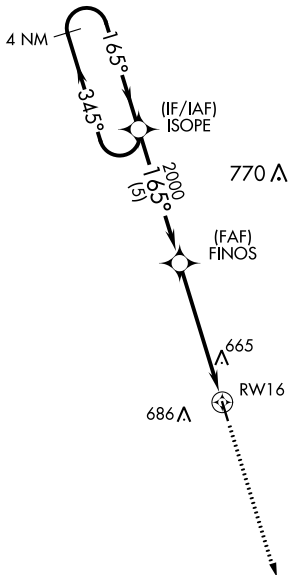
# RNAV (GPS)-A

POPLARVILLE/PEARL RIVER COUNTY (M13)

**▽** DME/DME RNP-0.3 NA. Use Bogalusa altimeter setting; when not received, use Hattiesburg altimeter setting and increase MDA 40 feet and increase Circling Cat B/C/D visibility ¼ mile. Helicopter visibility reduction below 1 SM NA. Procedure NA at night.

**△ NA** MISSED APPROACH: Climb to 2000 direct RISNE and hold.

BXA AWOS-3PT <b>118.025</b>	GULFPORT APP CON ★ <b>124.6 354.1</b>	CTAF <b>122.9</b> <b>①</b>
--------------------------------	--	-------------------------------



CATEGORY	A	B	C	D
<b>①</b> CIRCLING	1040-1 720 (800-1)	1120-1 800 (800-1)	1120-2¼ 800 (800-2¼)	1120-2½ 800 (800-2½)

MIRL Rwy 16-34 **①**