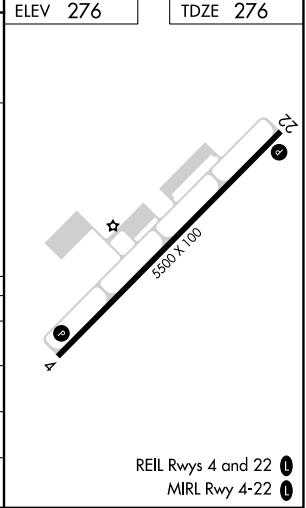
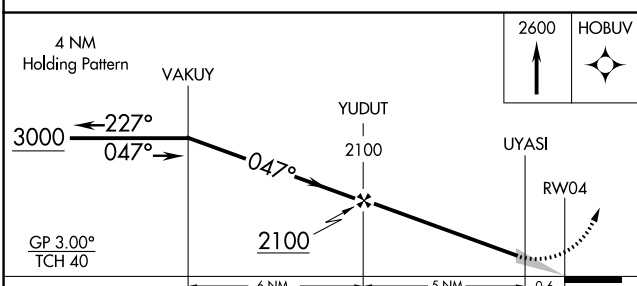
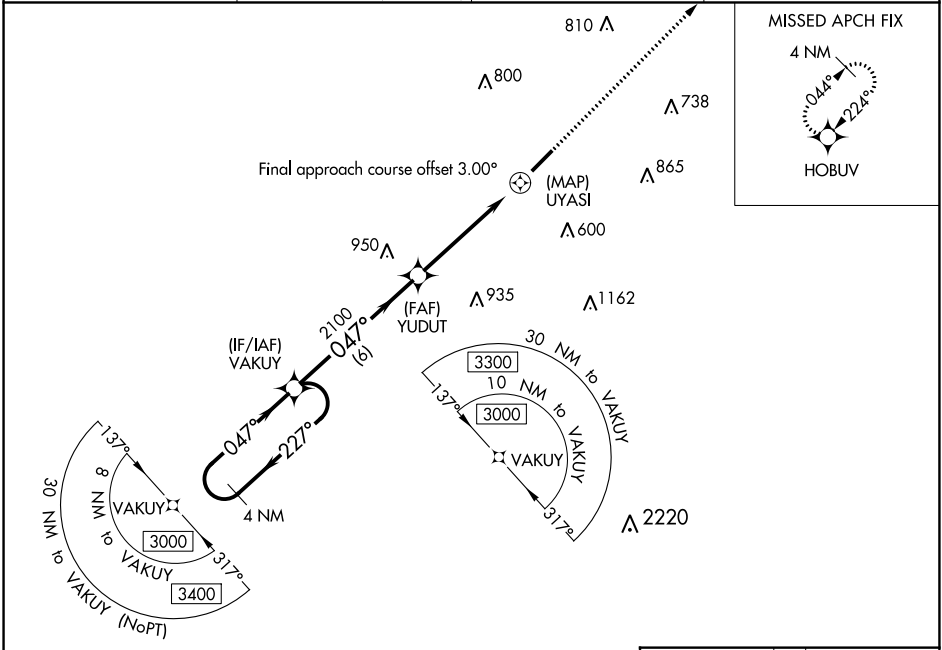


WAAS CH 97338 W04A	APP CRS 047°	Rwy Idg TDZE 276 Apt Elev 276	5500
--	------------------------	---	-------------

RNAV (GPS) RWY 4

CONWAY RGNL (CXW)

<p>Baro-VNAV NA. Use Bill and Hillary Clinton National/Adams Field altimeter setting; when not received, procedure NA. DME/DME RNP-0.3 NA.</p>	<p>MISSED APPROACH: Climb to 2600 direct HOBUV and hold.</p>		
<p>AWOS-2 118.775</p>	<p>LITTLE ROCK APP CON 135.4 353.6 (040°-239°) 119.5 306.2 (240°-039°)</p>	<p>CLNC DEL 121.2</p>	<p>UNICOM 123.05 (CTAF) 0</p>



CATEGORY	A	B	C	D
LPV DA	583-1		307 (400-1)	
LNAV/VNAV DA	658-1¼		382 (400-1¼)	
LNAV MDA	1340-1¼ 1064 (1100-1¼)	1340-1½ 1064 (1100-1½)	1340-3	1064 (1100-3)
C CIRCLING	1340-1¼ 1064 (1100-1¼)	1340-1½ 1064 (1100-1½)	1340-3 1064 (1100-3)	1380-3 1104 (1200-3)

REIL Rws 4 and 22 **0**
MIRL Rwy 4-22 **0**

SC-1, 08 AUG 2024 to 05 SEP 2024

SC-1, 08 AUG 2024 to 05 SEP 2024