

WAAS CH 82631 W26A	APP CRS 264°	Rwy ldg 2782 TDZE 937 Apt Elev 937
--	------------------------	---

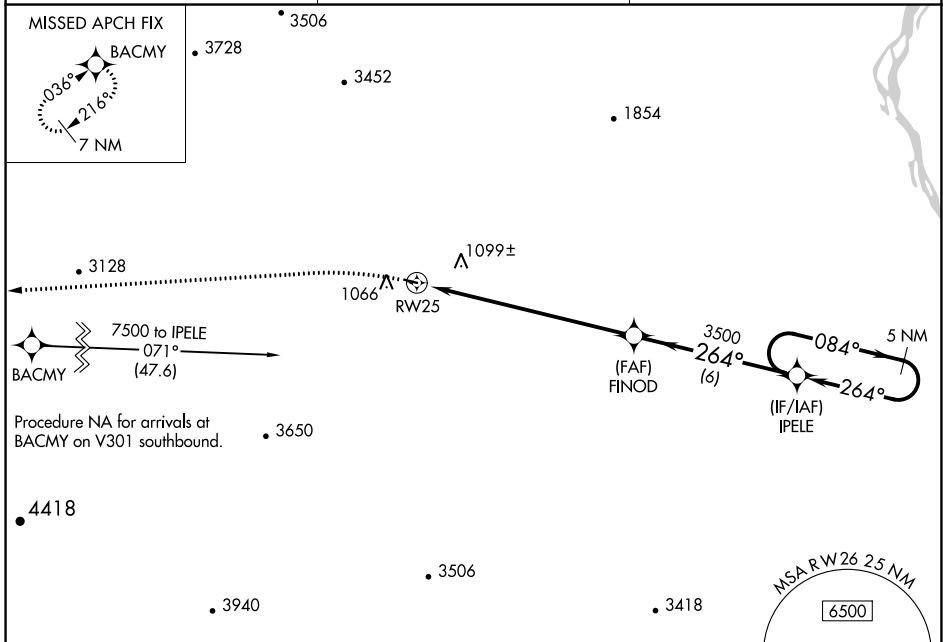
RNAV (GPS) RWY 26

CENTRAL (CEM) (PACE)

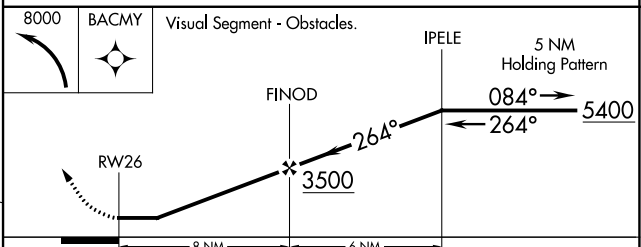
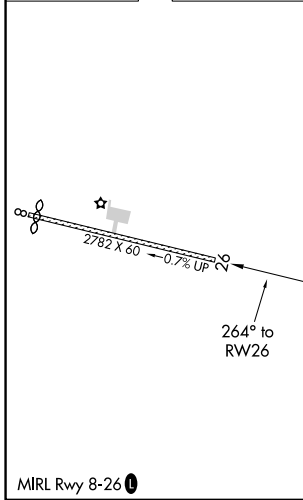
NA DME/DME RNP-0.3 NA. Use Fort Yukon altimeter setting; when not received, procedure NA. Helicopter visibility reduction below 3/4 SM NA. Night Landing: Rwy 8 NA.

MISSED APPROACH: Climbing left turn to 8000 direct BACMY and hold.

FYU/PFYU AWOS-3P 125.8	ANCHORAGE CENTER 135.0 284.7	(CTAF) 122.9 0
----------------------------------	--	--------------------------



ELEV 937	TDZE 937
----------	----------



CATEGORY	A	B	C	D
LP MDA	2440-1 1/4 1503 (1600-1 1/4)	2440-1 1/2 1503 (1600-1 1/2)		NA
LNAV MDA	2900-1 1/4 1963 (2000-1 1/4)	2900-1 1/2 1963 (2000-1 1/2)		NA
C CIRCLING	2900-1 1/4 1963 (2000-1 1/4)	2900-1 1/2 1963 (2000-1 1/2)		NA

AK, 16 MAY 2024 to 11 JUL 2024

AK, 16 MAY 2024 to 11 JUL 2024