

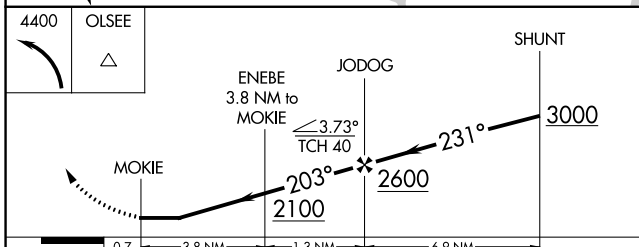
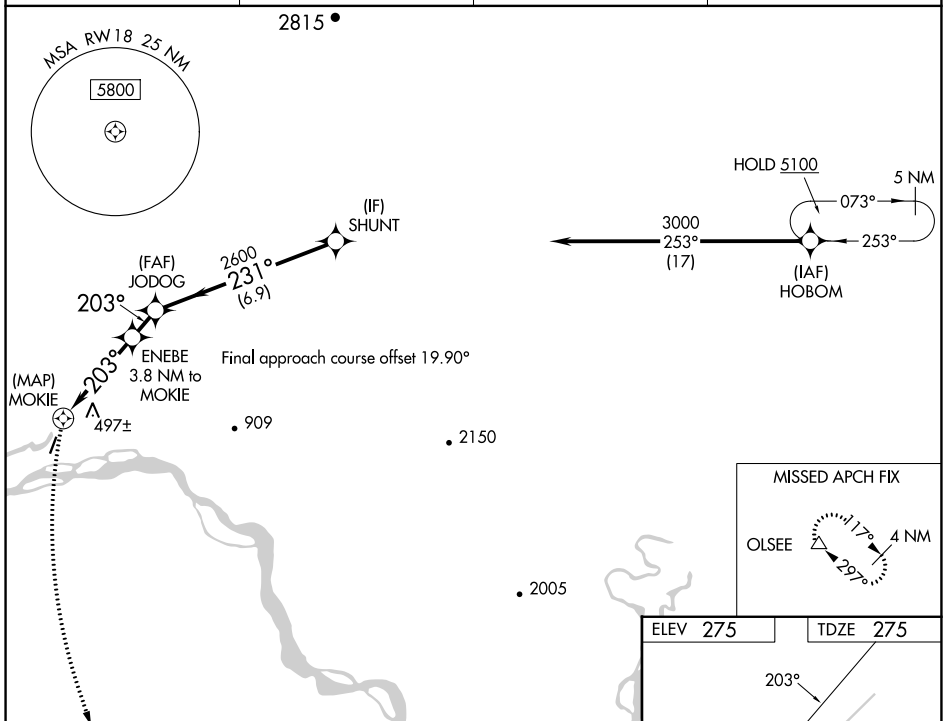
WAAS CH <b>69541</b> <b>W18A</b>	APP CRS <b>203°</b>	Rwy Idg TDZE Apt Elev	<b>3400</b> <b>275</b> <b>275</b>
--	------------------------	-----------------------------	---

# RNAV (GPS) RWY 18

MANLEY HOT SPRINGS (MLY)(P.A.M.L)

RNP APCH.	<p>When Tanana altimeter setting not received, procedure NA.</p> <p>⚠ NA Circling NA west of Rwy 18-36. Rwy 18 helicopter visibility reduction below 1 SM NA. Procedure NA at night.</p> <p>❄ -21°C</p>	<p>MISSED APPROACH: Climbing left turn to 4400 direct OLSEE and hold.</p>
-----------	---	---

TAL/PATA ASOS <b>135.1</b>	ANCHORAGE CENTER <b>120.9 319.2</b>	FAIRBANKS RADIO <b>122.3 122.65</b>	UNICOM <b>122.8(CTAF) 0</b>
-------------------------------	--	--	--------------------------------



ELEV 275	TDZE 275																				
<table border="1"> <thead> <tr> <th>CATEGORY</th> <th>A</th> <th>B</th> <th>C</th> <th>D</th> </tr> </thead> <tbody> <tr> <td>LP MDA</td> <td>1860-1¼ 1585 (1600-1¼)</td> <td>1860-1½ 1585 (1600-1½)</td> <td>1860-3 1585 (1600-3)</td> <td>NA</td> </tr> <tr> <td>LNAV MDA</td> <td>1960-1¼ 1685 (1700-1¼)</td> <td>1960-1½ 1685 (1700-1½)</td> <td>1960-3 1685 (1700-3)</td> <td>NA</td> </tr> <tr> <td>ⓐ CIRCLING</td> <td>1960-1¼ 1685 (1700-1¼)</td> <td>1960-1½ 1685 (1700-1½)</td> <td>1960-3 1685 (1700-3)</td> <td>NA</td> </tr> </tbody> </table>	CATEGORY	A	B	C	D	LP MDA	1860-1¼ 1585 (1600-1¼)	1860-1½ 1585 (1600-1½)	1860-3 1585 (1600-3)	NA	LNAV MDA	1960-1¼ 1685 (1700-1¼)	1960-1½ 1685 (1700-1½)	1960-3 1685 (1700-3)	NA	ⓐ CIRCLING	1960-1¼ 1685 (1700-1¼)	1960-1½ 1685 (1700-1½)	1960-3 1685 (1700-3)	NA	MIRL Rwy 18-36 0
CATEGORY	A	B	C	D																	
LP MDA	1860-1¼ 1585 (1600-1¼)	1860-1½ 1585 (1600-1½)	1860-3 1585 (1600-3)	NA																	
LNAV MDA	1960-1¼ 1685 (1700-1¼)	1960-1½ 1685 (1700-1½)	1960-3 1685 (1700-3)	NA																	
ⓐ CIRCLING	1960-1¼ 1685 (1700-1¼)	1960-1½ 1685 (1700-1½)	1960-3 1685 (1700-3)	NA																	

AK, 31 OCT 2024 to 26 DEC 2024

AK, 31 OCT 2024 to 26 DEC 2024