

WAAS CH 42537 W29A	APP CRS 292°	Rwy Idg 2756 TDZE 721 Apt Elev 721
--	------------------------	---

RNAV (GPS) RWY 29

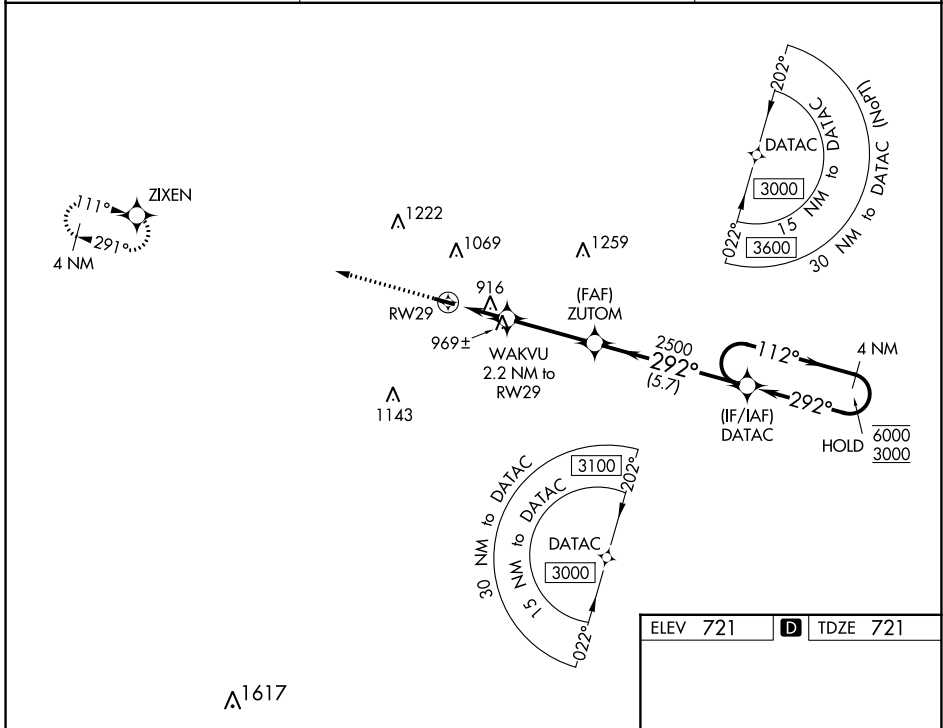
CYNTHIANA-HARRISON COUNTY (Ø18)

RNP APCH.

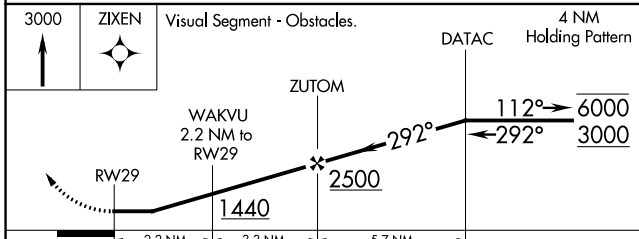
- ▼ Procedure NA at night. Rwy 29 helicopter visibility reduction below 1 SM NA. Use Georgetown altimeter setting; when not received, use Lexington altimeter setting and increase all MDA 40 feet.
- ▲ NA

MISSED APPROACH: Climb to 3000 direct ZIXEN and hold.

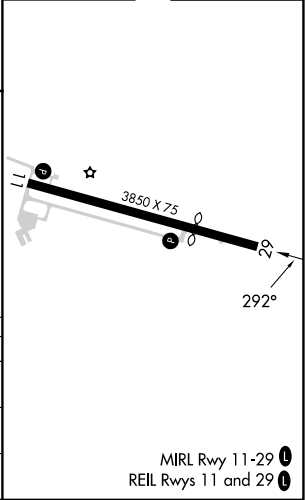
27K AWOS-3 119.975	LEXINGTON APP CON 120.15 259.3 (040°-220°) 120.75 298.9 (221°-039°)	UNICOM 122.8 (CTAF) Ø
------------------------------	---	--



ELEV 721	D TDZE 721
----------	-------------------



CATEGORY	A	B	C	D
LP MDA	1240-1	519 (600-1)		NA
LNAV MDA	1280-1	559 (600-1)		NA
C CIRCLING	1340-1 619 (700-1)	1560-1¼ 839 (900-1¼)		NA



MIRL Rwy 11-29 **Ø**
REIL Rvys 11 and 29 **Ø**

SE-1, 03 OCT 2024 to 31 OCT 2024

SE-1, 03 OCT 2024 to 31 OCT 2024