

WAAS CH 53532 W36A	APP CRS 002°	Rwy Idg 5003 TDZE 235 Apt Elev 239
--	------------------------	---

RNAV (GPS) RWY 36

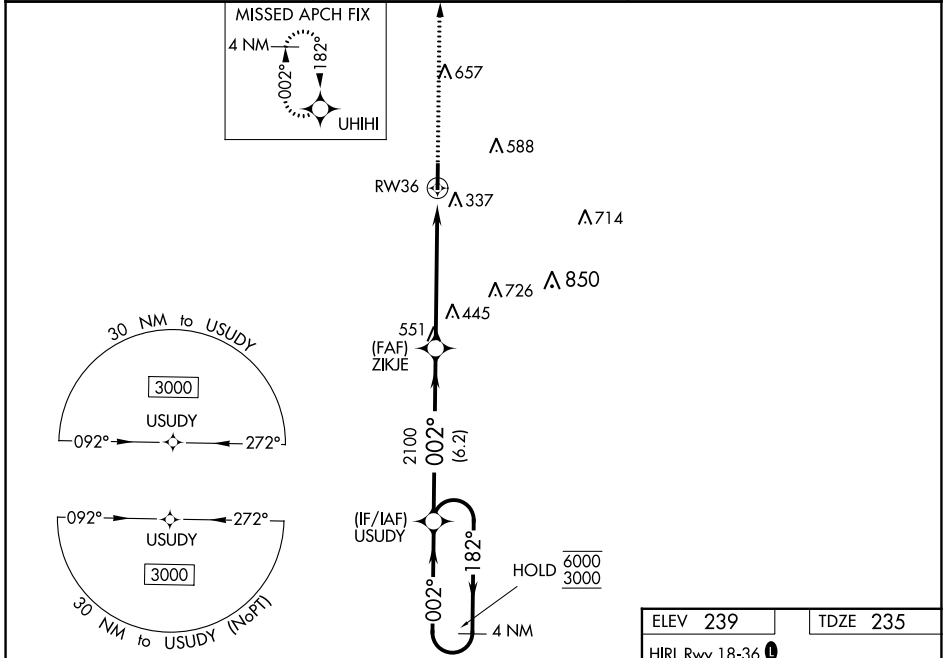
DELTA RGNL (DRP)

RNP APCH - GPS.

⚠ Baro-VNAV and VDP NA when using West Memphis altimeter setting. For uncompensated Baro-VNAV systems, LNAV/VNAV NA below -15°C or above 54°C. When local altimeter setting not received, use West Memphis altimeter setting; increase LPV DA to 503 feet and all visibilities ½ SM; increase LNAV/VNAV DA to 755 feet; increase all MDAs 80 feet.

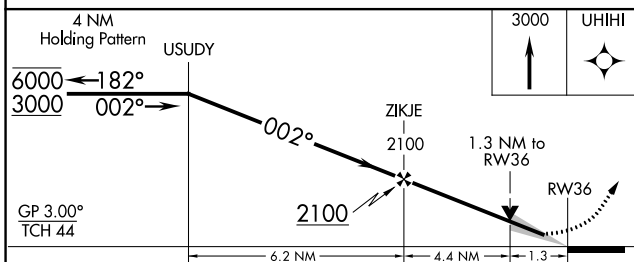
ⓘ MISSED APPROACH: Climb to 3000 direct UHIMI and hold, continue climb-in-hold to 3000.

AWOS-3P 120.0	MEMPHIS CENTER 135.3 335.8	UNICOM 123.0 (CTAF) ⓘ
-------------------------	--------------------------------------	---------------------------------



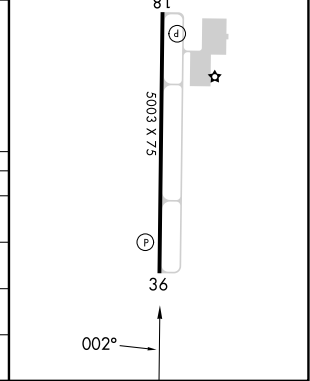
SC-1, 31 OCT 2024 to 28 NOV 2024

SC-1, 31 OCT 2024 to 28 NOV 2024



ELEV 239	TDZE 235
-----------------	-----------------

HIRL Rwy 18-36 ⓘ
REL Rwy 18 & 36 ⓘ



CATEGORY	A	B	C	D
LPV DA	435- ³ / ₄	200 (200- ³ / ₄)		NA
LNAV/VNAV DA	687-1 ³ / ₈	452 (500-1 ³ / ₈)		NA
LNAV MDA	700-1	465 (500-1)		NA
Ⓢ CIRCLING	760-1	521 (600-1)		NA