

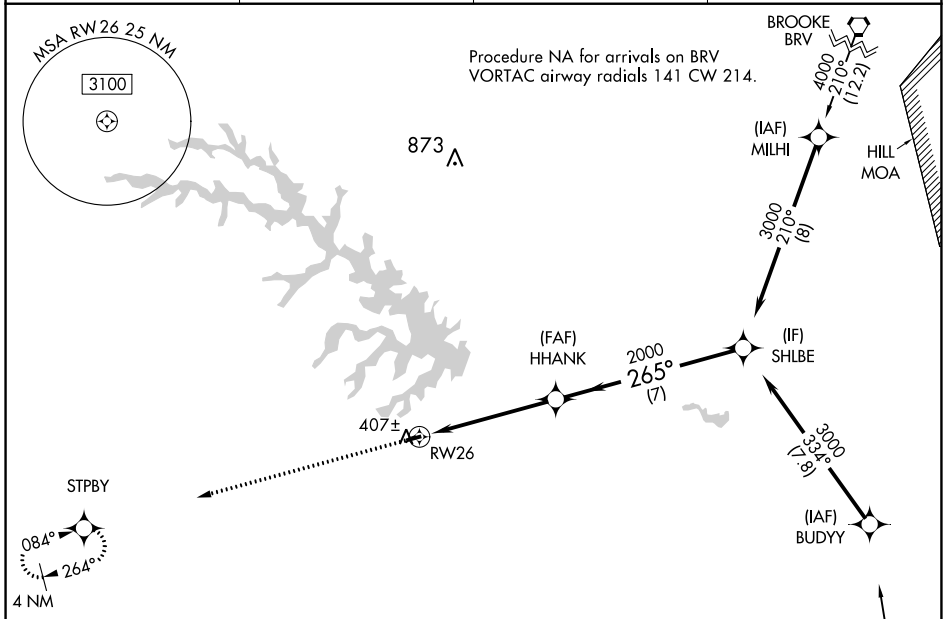
APP CRS	Rwy Idg	2558
265°	TDZE	351
	Apt Elev	351

RNAV (GPS) RWY 26

LAKE ANNA (7W4)

RNP APCH.	Procedure NA at night. When local altimeter setting not received, use Louisa altimeter setting and increase all MDA 60 feet. Helicopter visibility reduction below 3 SM NA.	MISSED APPROACH: Climb to 3000 direct STPBY and hold.
Procedure NA for arrivals on BRV VORTAC airway radials 141 CW 214.		

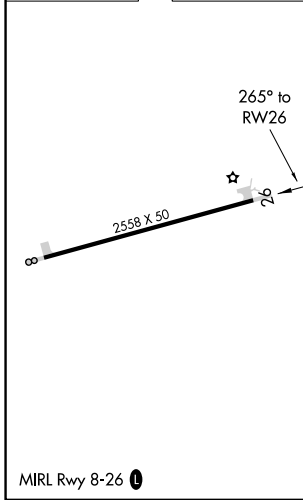
AWOS-3 120.775	LKU AWOS-3 119.475	POTOMAC APP CON 126.75 307.2	CTAF 122.9
--------------------------	------------------------------	--	----------------------



NE-3, 31 OCT 2024 to 28 NOV 2024

NE-3, 31 OCT 2024 to 28 NOV 2024

ELEV 351	TDZE 351
----------	----------



Procedure NA for arrivals on RIC
VORTAC airway radials 283 CW 048.

Visual Segment - Obstacles.

3000	STPBY	SHLBE		
↑	✧	3000		
	HHANK			
	2000			
	5.1 NM	7 NM		
CATEGORY	A	B	C	D
LNAV MDA	1360-3	1009 (1100-3)	NA	
CIRCLING	1360-3	1009 (1100-3)	NA	