

FORT RICHARDSON (ANCHORAGE), ALASKA

RNAV GPS RWY 36

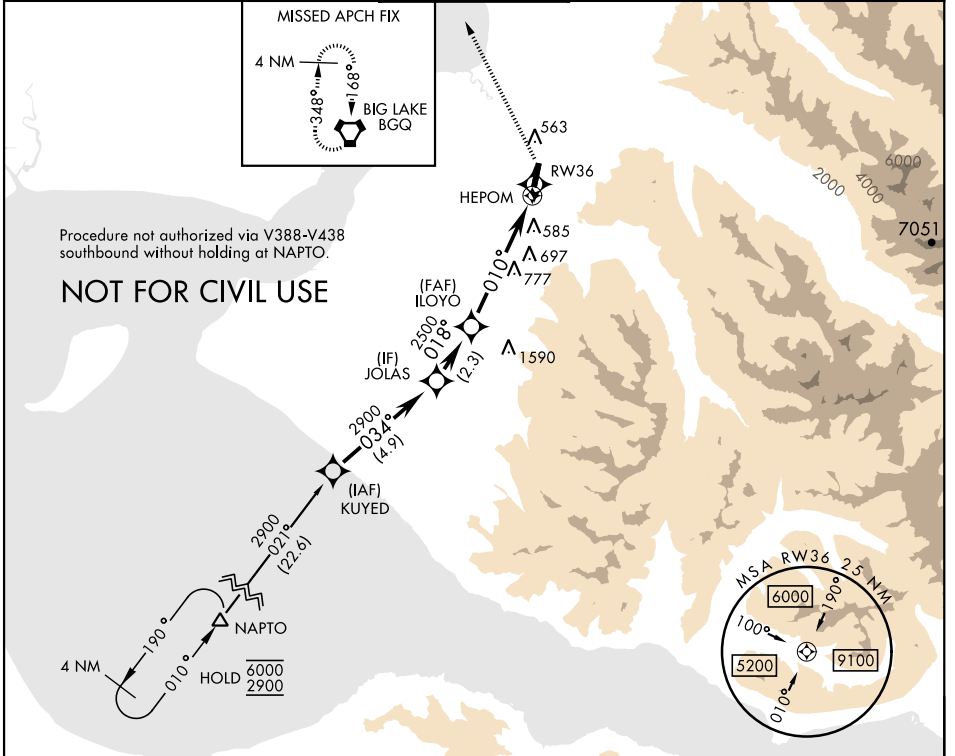
APCH CRS	Rwy ldg	3418
010°	TDZE	382
	Arprt Elev	387

[USA] BRYANT AAF (FORT RICHARDSON) (FRN) (PAFR)

RNP APCH - GPS
 ▼ Rwy 36 helicopter visibility reduction below 3/4 mile not authorized.
 * Circling not authorized E of Rwy 18-36.

MISSED APPROACH: Climbing left turn to 3000 proceed direct BGQ VORTAC and hold.

AWOS-3 134.25	ANCHORAGE APP CON 118.6 290.5	TOWER ★ 125.0 (CTAF) 0254.35	GND CON 121.25 239.25	CLNC DEL 119.1 363.2
-------------------------	---	---	---------------------------------	--------------------------------

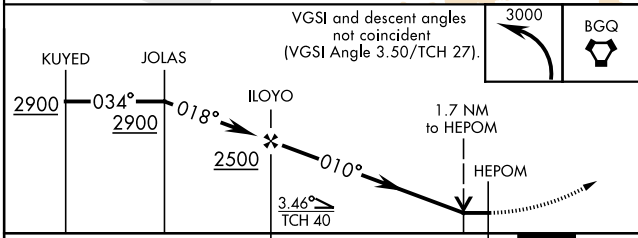


Procedure not authorized via V388-V438 southbound without holding at NAPTO.

NOT FOR CIVIL USE

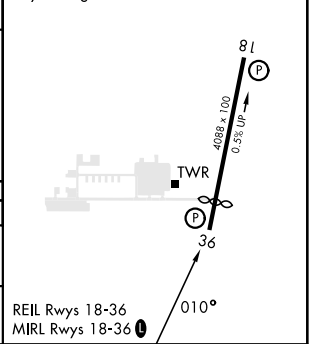
AK, 31 OCT 2024 to 26 DEC 2024

AK, 31 OCT 2024 to 26 DEC 2024



ELEV	387	TDZE	382
Rwy 36 ldg 3418'			

CATEGORY	A	B	C	D
LNVA MDA	1220-1 838 (900-1)	1220-1¼ 838 (900-1¼)	1220-2½ 838 (900-2½)	
CIRCLING *	1220-1¼ 833 (900-1¼)		1220-2½ 833 (900-2½)	1620-3 1233 (1300-3)



FORT RICHARDSON (ANCHORAGE), ALASKA 61° 16'N - 149° 39'E BRYANT AAF (FORT RICHARDSON) (FRN) (PAFR)
 Orig 31OCT24

RNAV GPS RWY 36