

APP CRS	Rwy Idg	<b>3049</b>
<b>176°</b>	TDZE	<b>842</b>
	Apt Elev	<b>842</b>

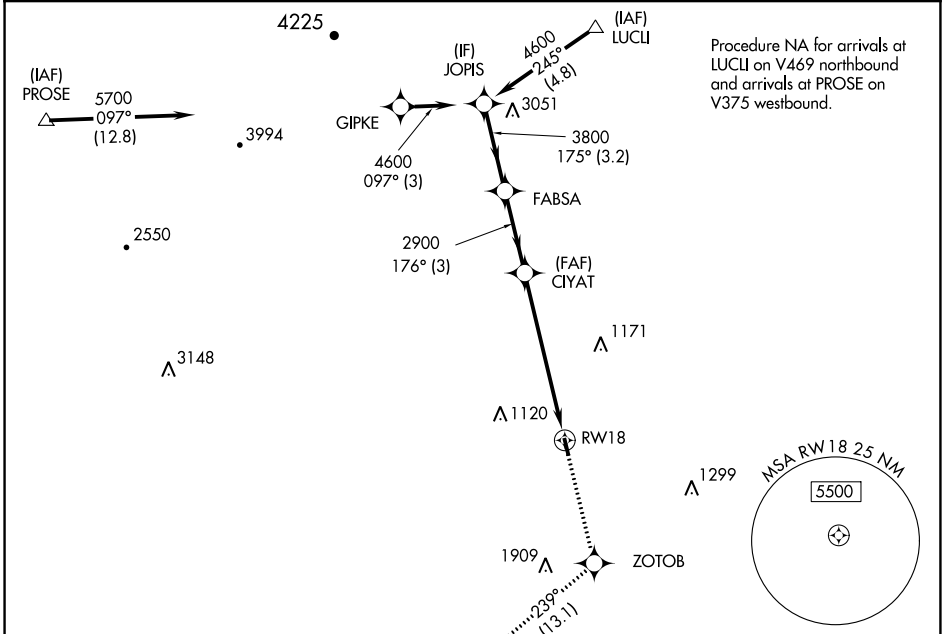
# RNAV (GPS) RWY 18

NEW LONDON (W90)

RNP APCH.  
 ▽ Rwy 18 helicopter visibility reduction below 1 SM NA. Procedure  
 ▲ NA NA at night. Use Lynchburg altimeter setting.

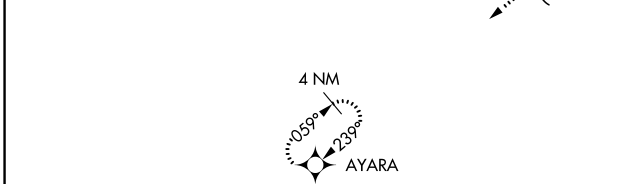
MISSED APPROACH: Climb to 4000 direct ZOTOB and on track 239° to AYARA and hold.

LYH ASOS <b>119.8</b>	ROANOKE APP CON <b>135.0 254.325</b>	UNICOM <b>122.8 (CTAF)</b>
--------------------------	---	-------------------------------

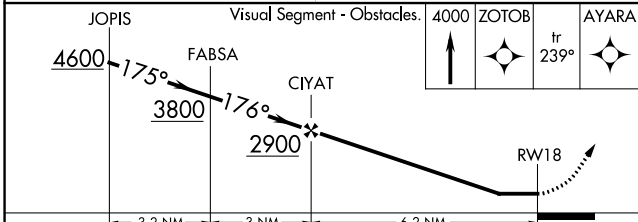


NE-3, 31 OCT 2024 to 28 NOV 2024

NE-3, 31 OCT 2024 to 28 NOV 2024



ELEV 842	TDZE 842
----------	----------



	3.2 NM	3 NM	6.2 NM	
CATEGORY	A	B	C	D
LNAV MDA	1860-3	1018 (1100-3)		NA
CIRCLING	1860-3	1018 (1100-3)		NA