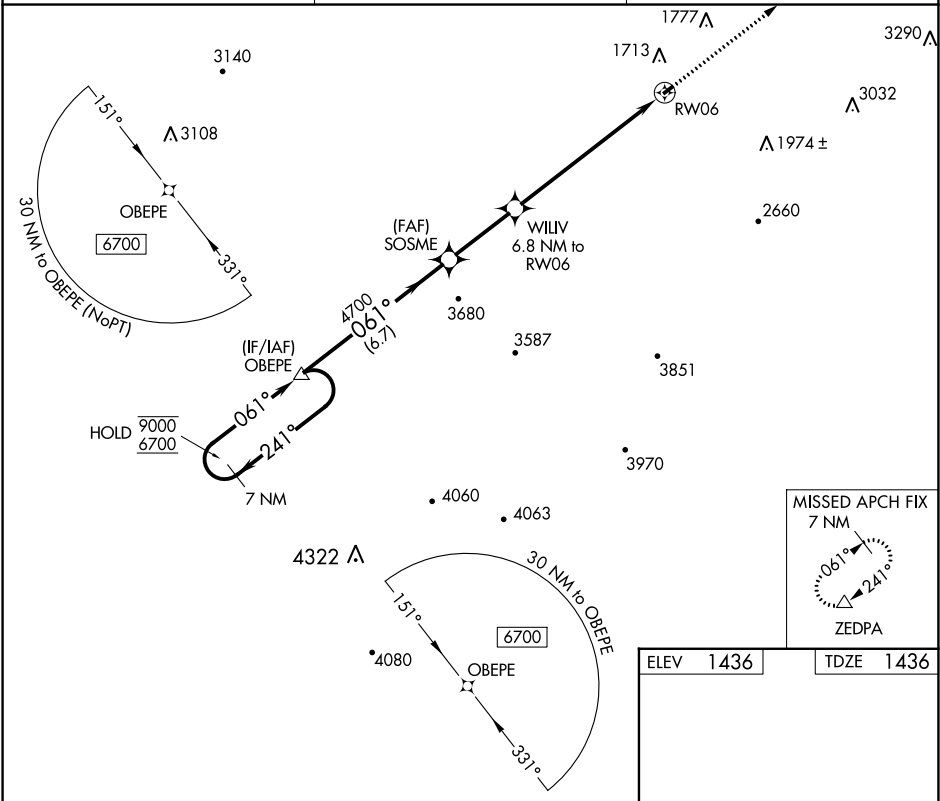


APP CRS	Rwy Idg	2004
061°	TDZE	1436
	Apt Elev	1436

RNAV (GPS) RWY 6

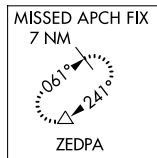
EAGLE'S NEST (W13)

RNP APCH.		MISSED APPROACH: Climb to 6300 direct ZEDPA and hold, continue climb-in-hold to 6300.
NA Rwy 6 helicopter visibility reduction below 1 SM NA. Procedure NA at night.		
AWOS-3PT 118.625	POTOMAC APP CON 132.85 323.125	UNICOM 123.05 (CTAF) 0

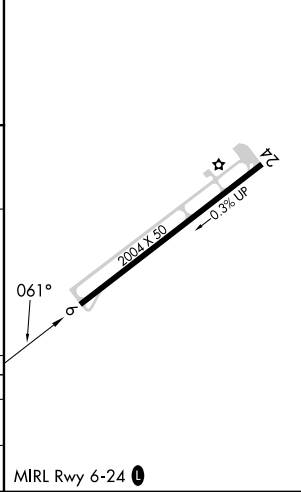
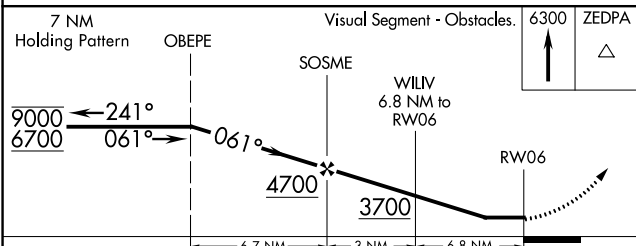


NE-3, 31 OCT 2024 to 28 NOV 2024

NE-3, 31 OCT 2024 to 28 NOV 2024



ELEV	1436	TDZE	1436
------	------	------	------



CATEGORY	A	B	C	D
LNVA MDA	2440-3	1004 (1100-3)		NA
CIRCLING	2440-3	1004 (1100-3)		NA