

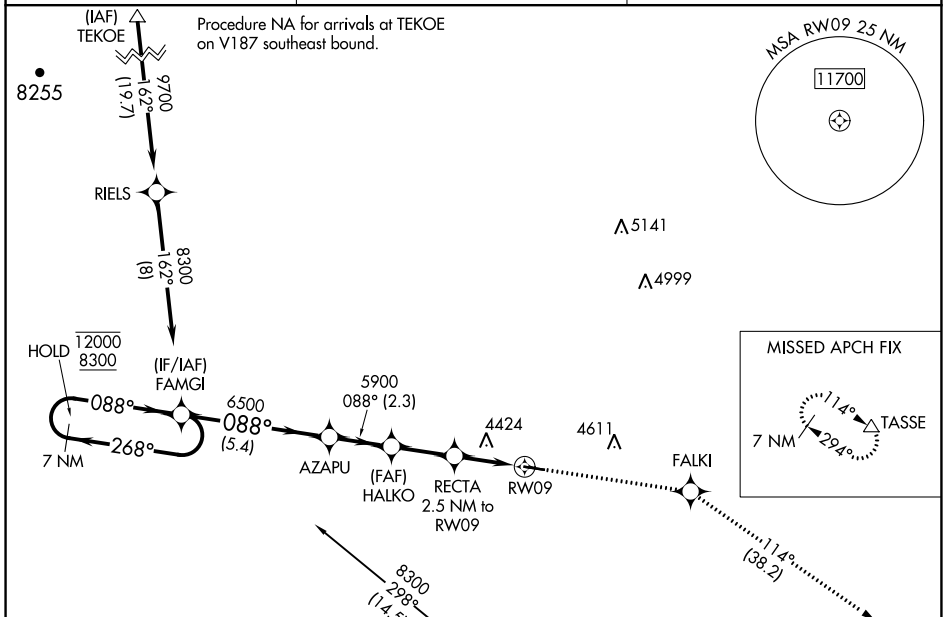
WAAS CH 99443 W09A	APP CRS 088°	Rwy Idg 4200 TDZE 4312 Apt Elev 4312
--	------------------------	---

RNAV (GPS) RWY 9

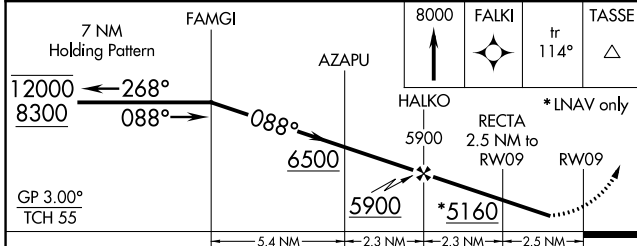
WHEATLAND COUNTY AT HARLOWTON (HWQ)

RNP APCH.	Rwy 9 helicopter visibility reduction below 1 SM NA. Baro-VNAV NA. NA Use Lewistown altimeter setting. Straight-in Rwy 9 NA at night, Circling Rwy 9 NA at night.	MISSED APPROACH: Climb to 8000 direct FALKI and on track 114° to TASSE and hold.
-----------	--	--

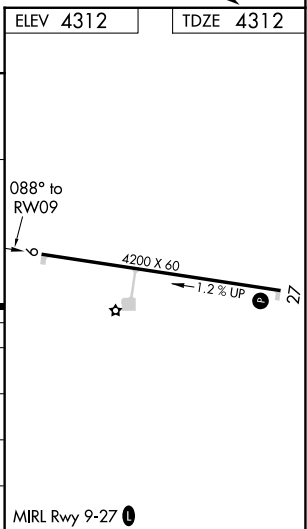
LWT ASOS 118.375	SALT LAKE CENTER 127.75 351.9	CTAF 122.90
----------------------------	---	-----------------------



ELEV 4312	TDZE 4312
-----------	-----------



CATEGORY	A	B	C	D
LPV DA	4673-1	361 (400-1)		NA
LNAV/VNAV DA	4673-1	361 (400-1)		NA
LNAV MDA	4800-1	488 (500-1)		NA
CIRCLING	4940-1 628 (700-1)	5000-1 688 (700-1)		NA



NW-1, 31 OCT 2024 to 28 NOV 2024

NW-1, 31 OCT 2024 to 28 NOV 2024