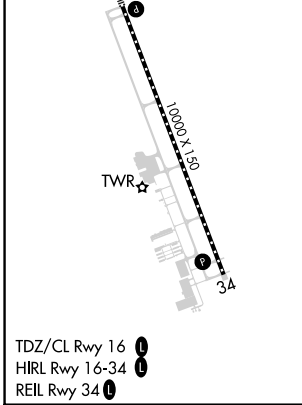
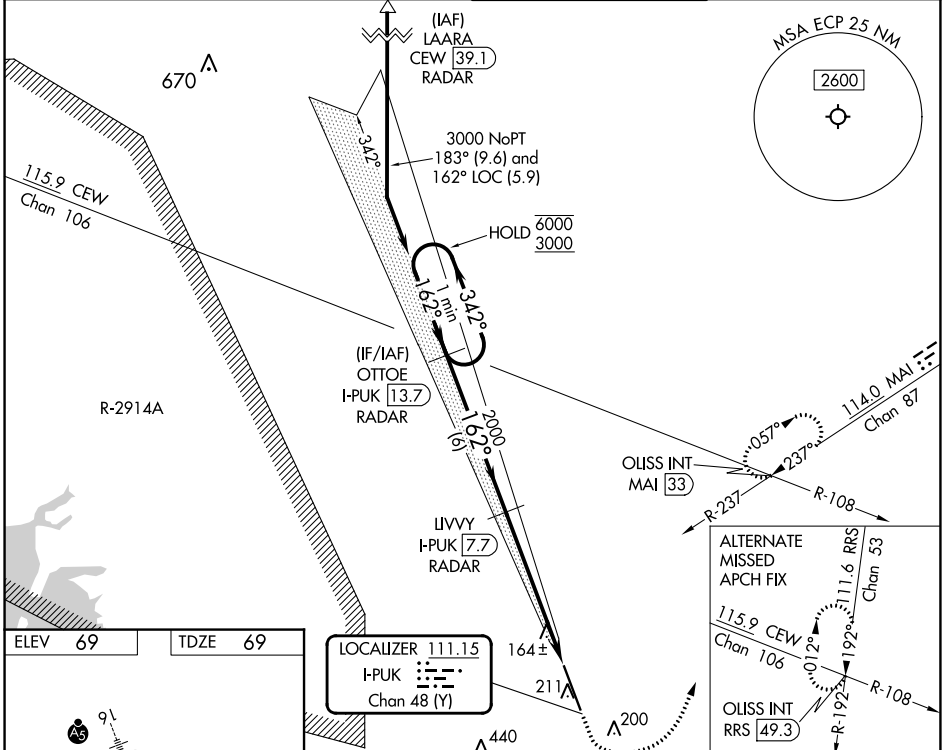


LOC/DME I-PUK <b>111.15</b> Chan 48 (Y)	APP CRS <b>162°</b>	Rwy Idg TDZE Apt Elev	<b>10000</b> <b>69</b> <b>69</b>
---	------------------------	-----------------------------	--

# ILS RWY 16 (SA CAT I & II)

NORTHWEST FLORIDA BEACHES INTL (ECP)

DME required for procedure entry. DME required.		MALS R	MISSED APPROACH: Climb to 600 then climbing left turn to 4000 on heading 025° and on MAI VORTAC R-237 to OUISS INT/MAI 33 DME and hold, continue climb-in-hold to 4000.
ATIS <b>119.975</b>	TYNDALL APP CON* <b>125.2</b> (N above 5000')	PANAMA CITY TOWER* <b>118.95</b> (CTAF) <b>0</b>	GND CON <b>121.65</b>



One Minute Holding Pattern	OTTOE I-PUK (13.7) RADAR	LIVVY I-PUK (7.7) RADAR	600	4000	MAI R-237	OUISS INT
6000 ← 342°	3000 ← 162°	2000 ← 162°	↑	↙	hdg 025°	
VGSI and ILS glidepath not coincident (VGSI Angle 3.00/TCH 72).						
CATEGORY	A	B	C	D		
S-ILS 16	SA CAT I RA 151/14 150 DA 219					
S-ILS 16	SA CAT II RA 101/12 100 DA 169					

**SA CATEGORY I & II ILS - SPECIAL AIRCREW & AIRCRAFT CERTIFICATION REQUIRED**

SE-3, 05 SEP 2024 to 03 OCT 2024

SE-3, 05 SEP 2024 to 03 OCT 2024