

|  |                        |   |
|--|------------------------|---|
| WAAS<br>CH <b>97637</b><br><b>W27A</b> | APP CRS<br><b>268°</b> | Rwy Idg <b>3500</b><br>TDZE <b>912</b><br>Apt Elev <b>916</b> |
|--|------------------------|---|

# RNAV (GPS) RWY 27

OCEANA COUNTY (C04)

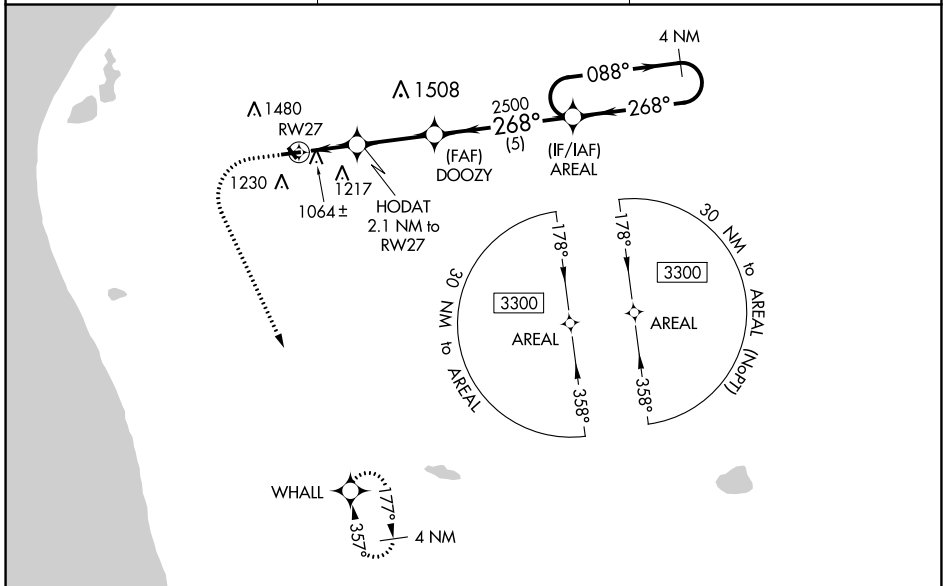
**⚠** Baro-VNAV NA when using Fremont altimeter setting. For uncompensated Baro-VNAV systems, LNAV/VNAV NA below -16°C (4°F) or above 54°C (130°F).  
**⚠** NA When local altimeter setting not received, use Fremont altimeter setting and increase all DA 64 feet, all MDA 80 feet, and LPV and LNAV/VNAV visibility all Cats ¼ mile. DME/DME RNP-0.3 NA. Procedure NA at night. Helicopter visibility reduction below 1 SM NA. Circling NA to Rwy 15 and 33.

**MISSED APPROACH:**  
Climb to 1500 then climbing left turn to 3300 direct WHALL and hold.

AWOS-AV  
**122.7**

GREAT LAKES APP CON\*  
**119.8 290.35**

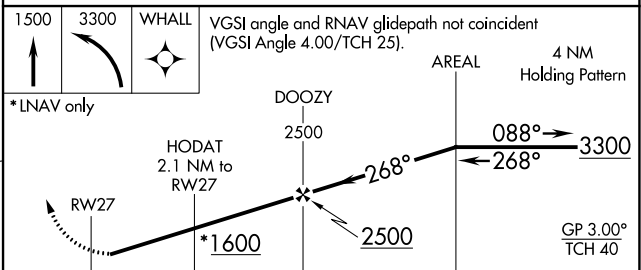
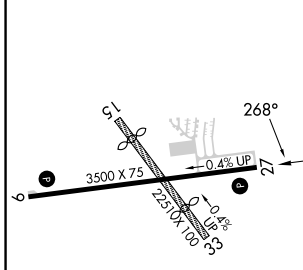
UNICOM  
**122.7 (CTAF) 0**



EC-1, 31 OCT 2024 to 28 NOV 2024

EC-1, 31 OCT 2024 to 28 NOV 2024

|          |          |
|----------|----------|
| ELEV 916 | TDZE 912 |
|----------|----------|



| CATEGORY     | A           | B            | C | D  |
|--------------|-------------|--------------|---|----|
| LPV DA       | 1254-1½     | 342 (400-1½) |   | NA |
| LNAV/VNAV DA | 1236-1½     | 324 (400-1½) |   | NA |
| LNAV MDA     | 1340-1      | 428 (500-1)  |   | NA |
| CIRCLING     | 1540-1      | 1780-1¼      |   | NA |
|              | 624 (700-1) | 864 (900-1½) |   |    |