

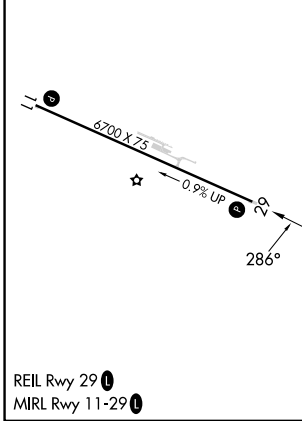
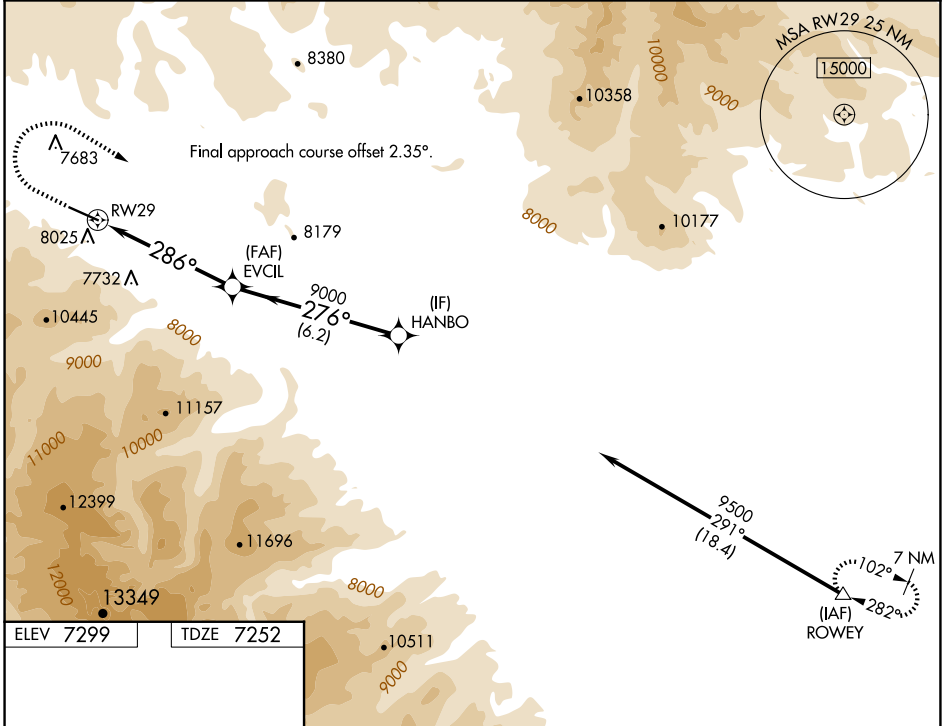
WAAS CH <b>70447</b> <b>W29A</b>	APP CRS <b>286°</b>	Rwy Idg TDZE <b>7252</b> Apt Elev <b>7299</b>
--	------------------------	---

# RNAV (GPS) RWY 29

DUBOIS MUNI (DUB)

RNP APCH - GPS.	MISSED APPROACH: Climb to 8300 then climbing right turn to 11500 direct ROWEY and hold. *Missed approach requires minimum climb of 300 feet per NM to 9100.
<p>⚠ When local altimeter setting not received, procedure NA.                  ⚠ Rwy 29 helicopter visibility reduction below 3/4 SM NA.                  Circling NA south of Rwy 11-29.</p>	

AWOS-3PT <b>118.275</b>	SALT LAKE CENTER <b>133.25 285.6</b>	CTAF <b>122.9</b>
----------------------------	---	----------------------



8300	11500	ROWEY		
CATEGORY	A	B	C	D
LPV DA*	8020-2½ 768 (800-2½)			NA
LNAV MDA*	8700-1¼ 1448 (1500-1½)	8700-1½ 1448 (1500-1½)	8700-3 1448 (1500-3)	NA
CIRCLING	8700-1¼ 1401 (1500-1½)	8700-1½ 1401 (1500-1½)	8800-3 1501 (1600-3)	NA

NW-1, 20 FEB 2025 to 20 MAR 2025

NW-1, 20 FEB 2025 to 20 MAR 2025