

WAAS CH <b>42824</b> <b>W05A</b>	APP CRS <b>045°</b>	Rwy Idg TDZE Apt Elev	<b>5002</b> <b>411</b> <b>412</b>
----------------------------------------	------------------------	-----------------------------	-----------------------------------------

**RNAV (GPS) RWY 5**  
HANCOCK COUNTY/RON LEWIS FLD (KY8)

RNP APCH.

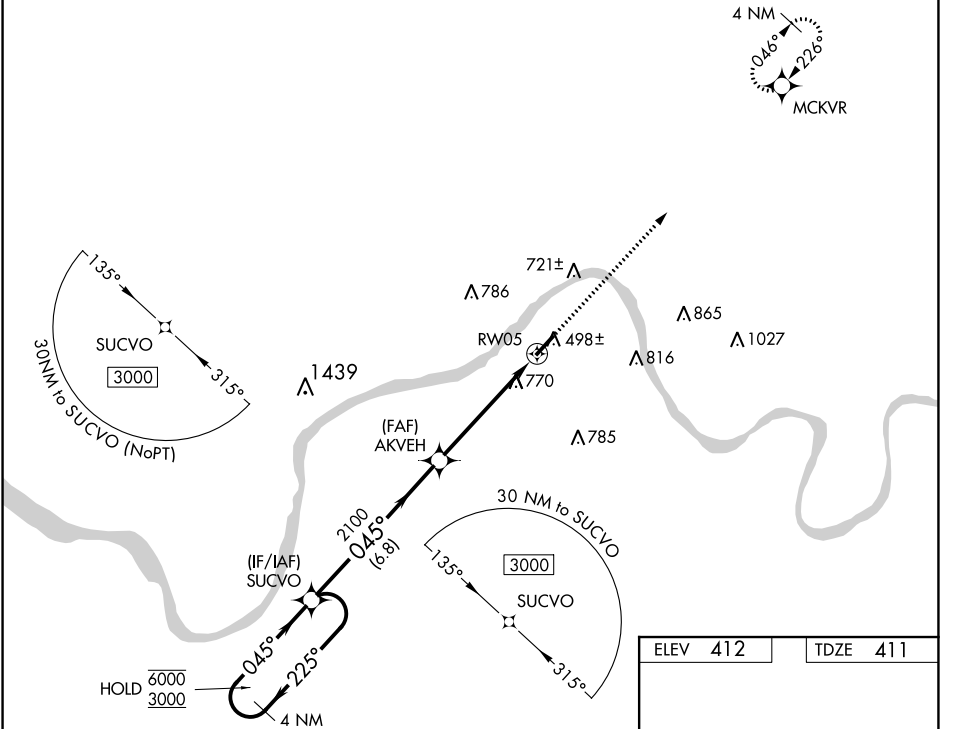
**▼** Rwy 5 helicopter visibility reduction below ¼ SM NA. When local altimeter setting not received, use Owensboro altimeter setting and increase all MDAs 60 feet; increase LP and LNAV Cat C visibility ⅛ SM and Circling Cat C visibility ¼ SM.

**MISSED APPROACH:**  
Climb to 3000 direct MCKVR and hold.

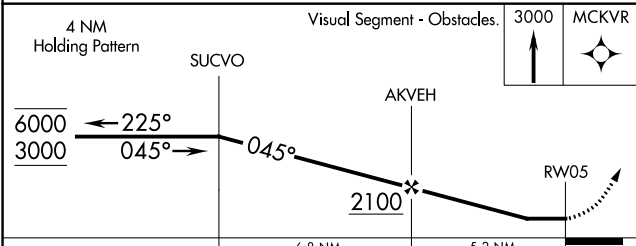
AWOS-3  
**119.775**

EVANSVILLE APP CON ★  
**124.025 290.9**

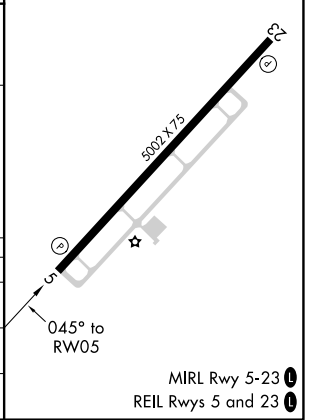
UNICOM  
**123.0 (CTAF) 0**



ELEV 412	TDZE 411
----------	----------



CATEGORY	A	B	C	D
LP MDA	1020-1	609 (700-1)	1020-1¾ 609 (700-1¾)	NA
LNAV MDA	1020-1	609 (700-1)	1020-1¾ 609 (700-1¾)	NA
CIRCLING	1020-1 608 (700-1)	1080-1 668 (700-1)	1080-1¾ 668 (700-1¾)	NA



SE-1, 18 MAY 2023 to 15 JUN 2023

SE-1, 18 MAY 2023 to 15 JUN 2023