

APP CRS	Rwy Idg	3701
339°	TDZE	55
	Apt Elev	55

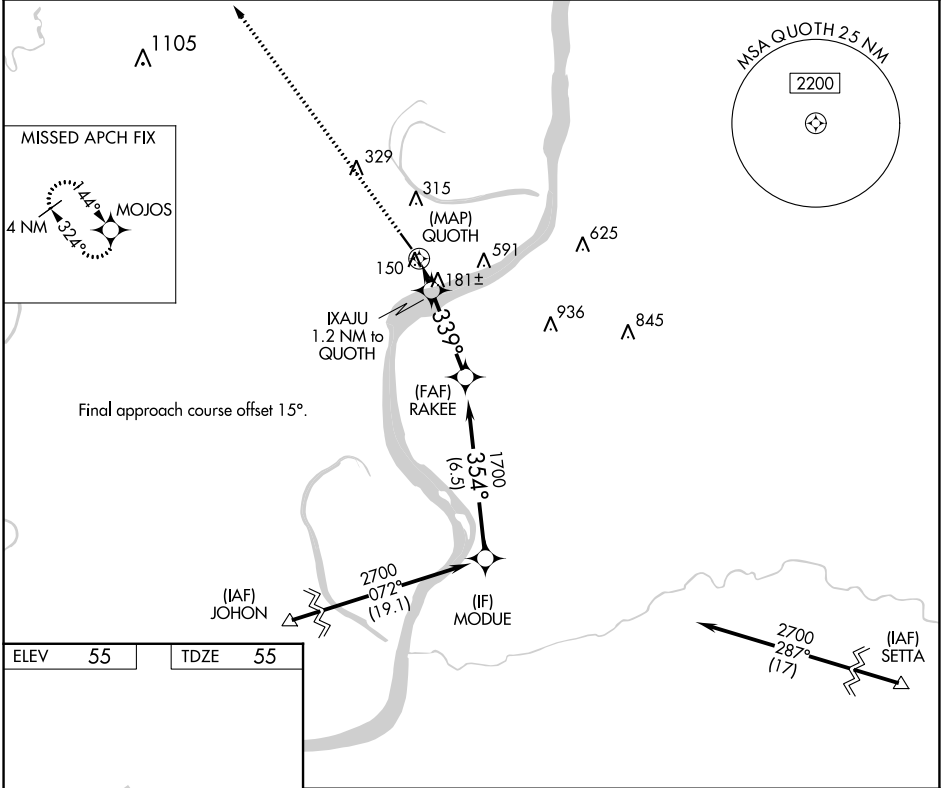
RNAV (GPS) RWY 32

CONCORDIA PARISH (ØR4)

NA DME/DME RNP-0.3 NA. Use Natchez altimeter setting; when not received, use Esler Rgnl altimeter setting and increase all MDA 60 feet and Circling Cat C visibility ¼ mile. Helicopter visibility reduction below ¾ SM NA.

MISSED APPROACH: Climb to 2700 direct MOJOS and hold.

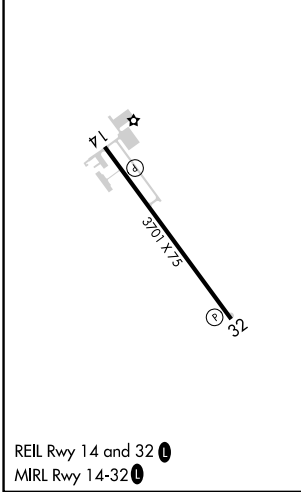
AWOS-3 118.2	HOUSTON CENTER 120.975 299.6	UNICOM 122.8 (CTAF) 0
------------------------	--	---------------------------------



SC-4, 08 AUG 2024 to 05 SEP 2024

SC-4, 08 AUG 2024 to 05 SEP 2024

ELEV	55	TDZE	55
------	----	------	----



2700	MOJOS				
		QUOTH	RAKEE	MODUE	
		IXAJU 1.2 NM to QUOTH	1700	2700	
		640	339°	354°	
			3.00° TCH 50		
		0.5	1.2 NM	3.3 NM	6.5 NM
CATEGORY	A	B	C	D	
LNAV MDA	500-1	445 (500-1)	500-1 3/8 445 (500-1 3/8)	NA	
C CIRCLING	680-1	625 (700-1)	960-2 3/4 905 (1000-2 3/4)	NA	