

VORTAC TYI <b>117.8</b> Chan <b>125</b>	APP CRS <b>014°</b>	Rwy Idg TDZE <b>144</b> Apt Elev <b>145</b>	<b>5500</b>
---	------------------------	---	-------------

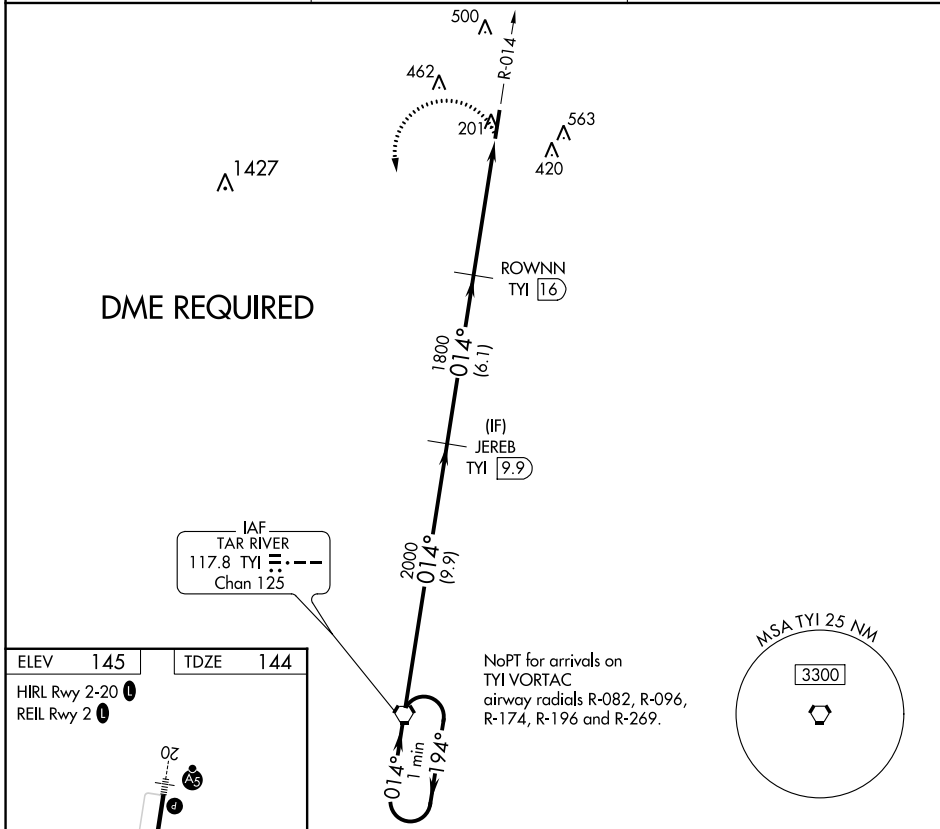
# VOR RWY 2

HALIFAX/NORTHAMPTON RGNL (IXA)

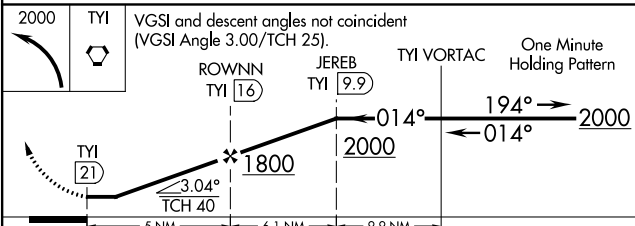
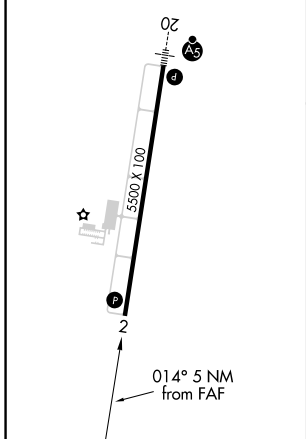
**⚠** Circling NA east of Rwy 2-20.  
**⚠** Rwy 2 helicopter visibility reduction below 3/4 SM NA.  
 DME required.

MISSED APPROACH: Climbing left turn to 2000 direct TYI VORTAC and hold.

AWOS-3PT <b>119.975</b>	WASHINGTON CENTER <b>132.025 290.425</b>	UNICOM <b>123.075 (CTAF)</b>
----------------------------	---	---------------------------------



ELEV <b>145</b>	TDZE <b>144</b>
HIRL Rwy 2-20	REIL Rwy 2



CATEGORY	A	B	C	D
S-2	780-1	636 (700-1)	780-1 <sup>3</sup> / <sub>4</sub>	636 (700-1 <sup>3</sup> / <sub>4</sub> )
<b>C</b> CIRCLING	780-1	635 (700-1)	780-1 <sup>3</sup> / <sub>4</sub> 635 (700-1 <sup>3</sup> / <sub>4</sub> )	860-2 <sup>1</sup> / <sub>4</sub> 715 (800-2 <sup>1</sup> / <sub>4</sub> )

SE-2, 03 OCT 2024 to 31 OCT 2024

SE-2, 03 OCT 2024 to 31 OCT 2024