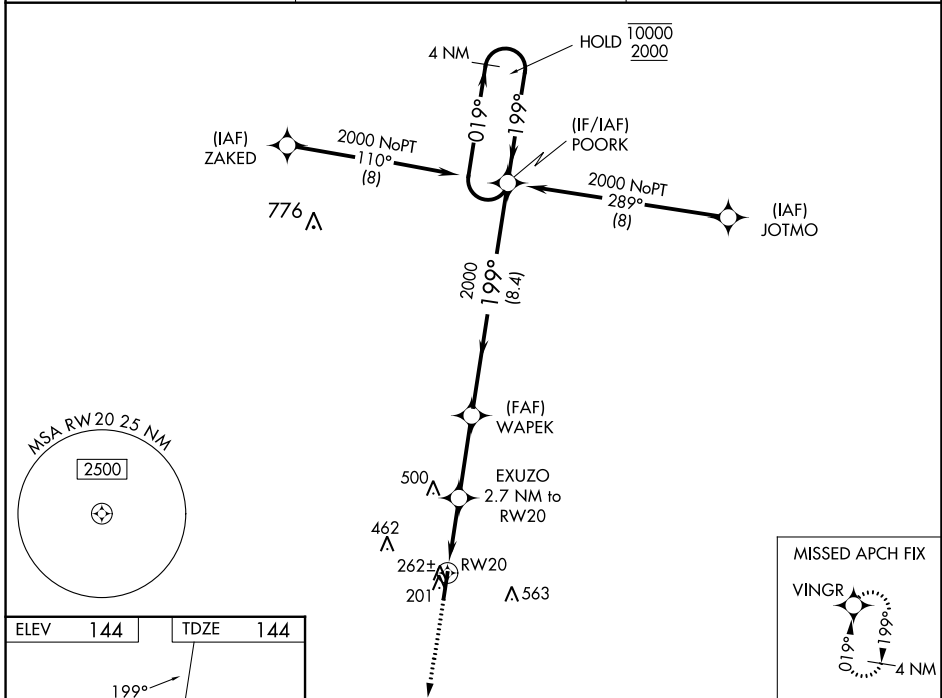


WAAS CH <b>72725</b> <b>W20A</b>	APP CRS <b>199°</b>	Rwy Idg <b>5500</b> TDZE <b>144</b> Apt Elev <b>144</b>
--	------------------------	---

# RNAV (GPS) RWY 20

HALIFAX/NORTHAMPTON RGNL (IXA)

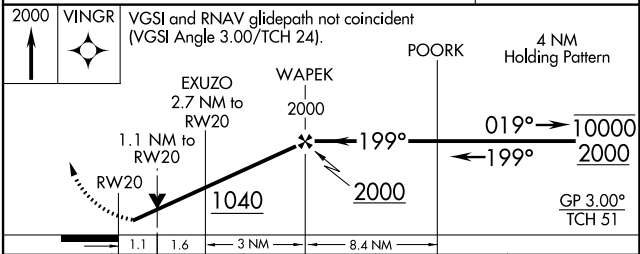
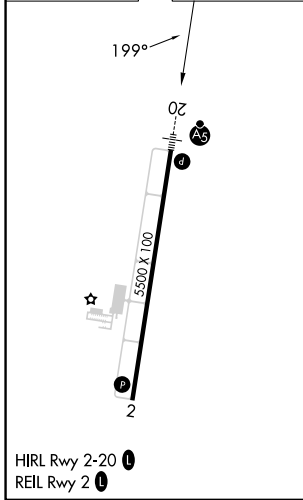
RNP APCH-GPS.		MALSR	MISSED APPROACH: Climb to 2000 direct VINGR and hold.
⚠ Circling NA east of Rwy 2-20. Rwy 20 helicopter visibility reduction below 3/4 SM NA. Inop table does not apply to LPV. For uncompensated Baro-VNAV systems, LNAV/VNAV NA below -1.5°C or above 54°C. For inop ALS increase LNAV/VNAV visibility all Cats to 1/2 SM and LNAV visibility all Cats to 1 SM.			
AWOS-3PT <b>119.975</b>	WASHINGTON CENTER <b>132.025 290.425</b>	UNICOM <b>123.075 (CTAF) 0</b>	



SE-2, 08 AUG 2024 to 05 SEP 2024

SE-2, 08 AUG 2024 to 05 SEP 2024

ELEV <b>144</b>	TDZE <b>144</b>
-----------------	-----------------



CATEGORY	A	B	C	D
LPV DA		394-3/4	250 (300-3/4)	
LNAV/VNAV DA		423-3/4	279 (300-3/4)	
LNAV MDA		520-3/4	376 (400-3/4)	
<input checked="" type="checkbox"/> CIRCLING	580-1 436 (500-1)	600-1 456 (500-1)	780-1 3/4 636 (700-1 3/4)	860-2 1/4 716 (800-2 1/4)