

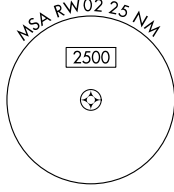
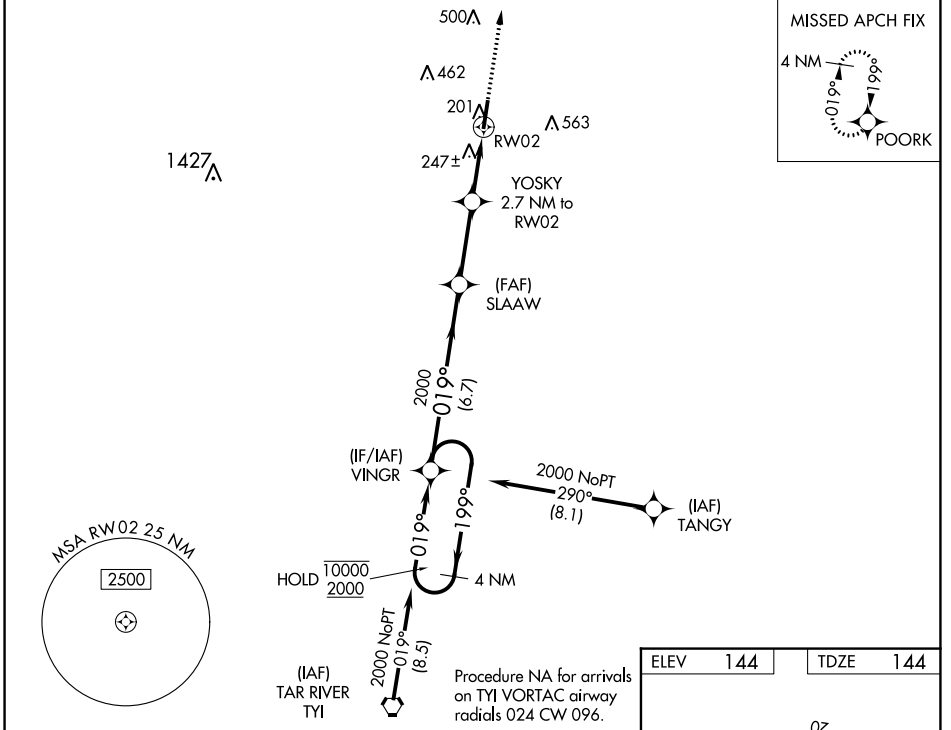
WAAS CH <b>78025</b> <b>W02A</b>	APP CRS <b>019°</b>	Rwy Idg <b>5500</b> TDZE <b>144</b> Apt Elev <b>144</b>
--	------------------------	---

# RNAV (GPS) RWY 2

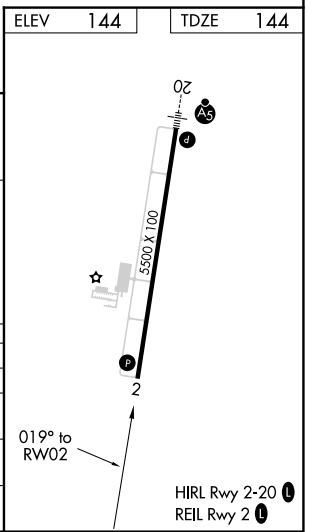
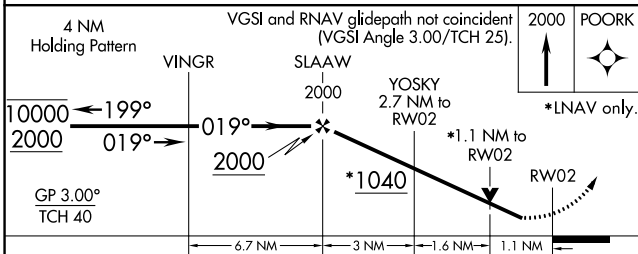
HALIFAX/NORTHAMPTON RGNL (IXA)

RNP APCH - GPS	Rwy 2 helicopter visibility reduction below 3/4 SM NA. For uncompensated Baro-VNAV systems, LNAV/VNAV NA below -15°C or above 54°C. Circling NA east of Rwys 2-20.	MISSED APPROACH: Climb to 2000 direct POORK and hold.
----------------	--	---

AWOS-3PT <b>119.975</b>	WASHINGTON CENTER <b>132.025 290.425</b>	UNICOM <b>123.075 (CTAF) 0</b>
----------------------------	---	-----------------------------------



ELEV	144	TDZE	144
------	-----	------	-----



CATEGORY	A	B	C	D
LPV DA		394-7/8	250 (300-7/8)	
LNAV/VNAV DA		433-1	289 (300-1)	
LNAV MDA		500-1	356 (400-1)	
<b>CIRCLING</b>	580-1 436 (500-1)	600-1 456 (500-1)	780-1 3/4 636 (700-1 3/4)	860-2 1/4 716 (800-2 1/4)

SE-2, 03 OCT 2024 to 31 OCT 2024

SE-2, 03 OCT 2024 to 31 OCT 2024