

WAAS CH 86334 W03A	APP CRS 033°	Rwy Idg 5001 TDZE 3684 Apt Elev 3705
--	------------------------	---

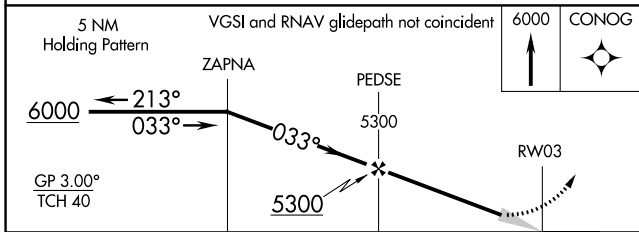
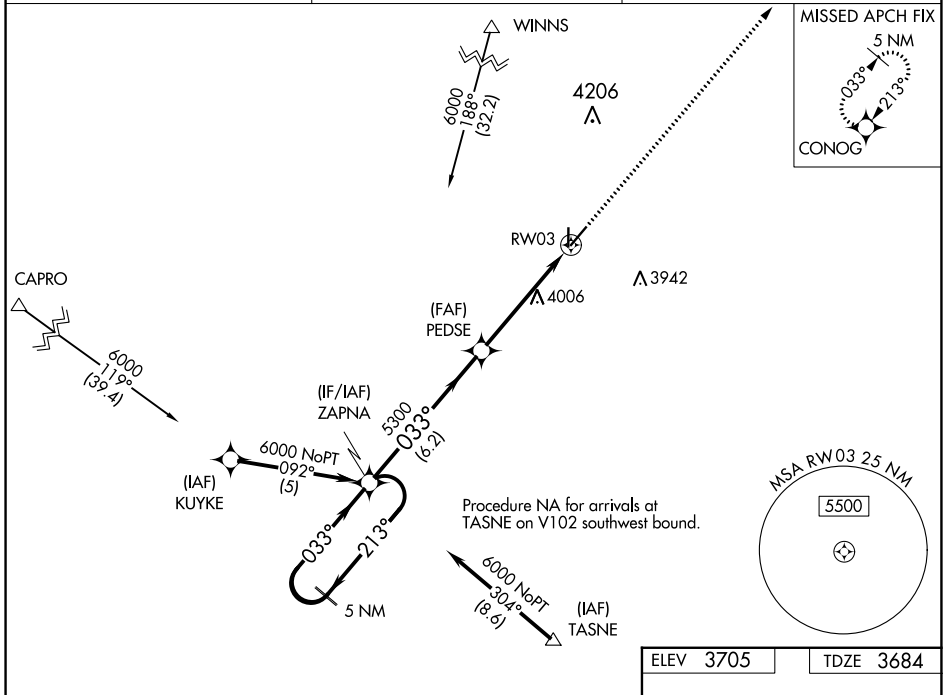
RNAV (GPS) RWY 3

YOAKUM COUNTY (F98)

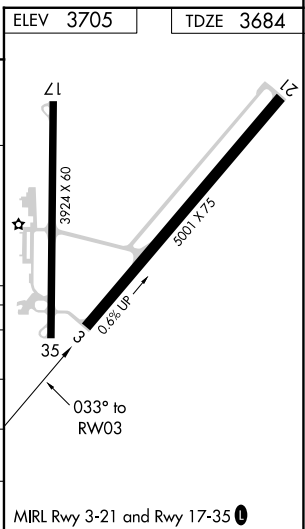
Baro-VNAV NA. DME/DME RNP-0.3 NA. Use Hobbs altimeter setting, when not received, use Seminole altimeter setting and increase all DA 41 feet and all MDA 60 feet, increase LPV Cats A/B visibility to 1/4 mile, LNAV/VNAV Cat A/B to 1/2 mile, LNAV and Circling Cat B to 1/4 mile.

MISSED APPROACH: Climb to 6000 direct CONOG and hold.

HOB AWOS-3 119.75	FORT WORTH CENTER 132.6 269.05	CTAF 122.9
-----------------------------	--	----------------------



CATEGORY	A	B	C	D
LPV DA	4026-1 $\frac{1}{8}$	342 (400-1 $\frac{1}{8}$)		NA
LNAV/VNAV DA	4073-1 $\frac{3}{8}$	389 (400-1 $\frac{3}{8}$)		NA
LNAV MDA	4400-1	716 (700-1)		NA
CIRCLING	4400-1	695 (700-1)		NA



SC-2, 31 OCT 2024 to 28 NOV 2024

SC-2, 31 OCT 2024 to 28 NOV 2024