

COPTER RNAV (GPS) Y RWY 9 GREENE COUNTY (WAY)

APP CRS	Rwy Idg	3500
088°	TDZE	1069
	Apt Elev	1069

RNP APCH - GPS.

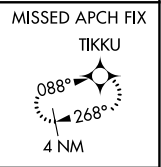
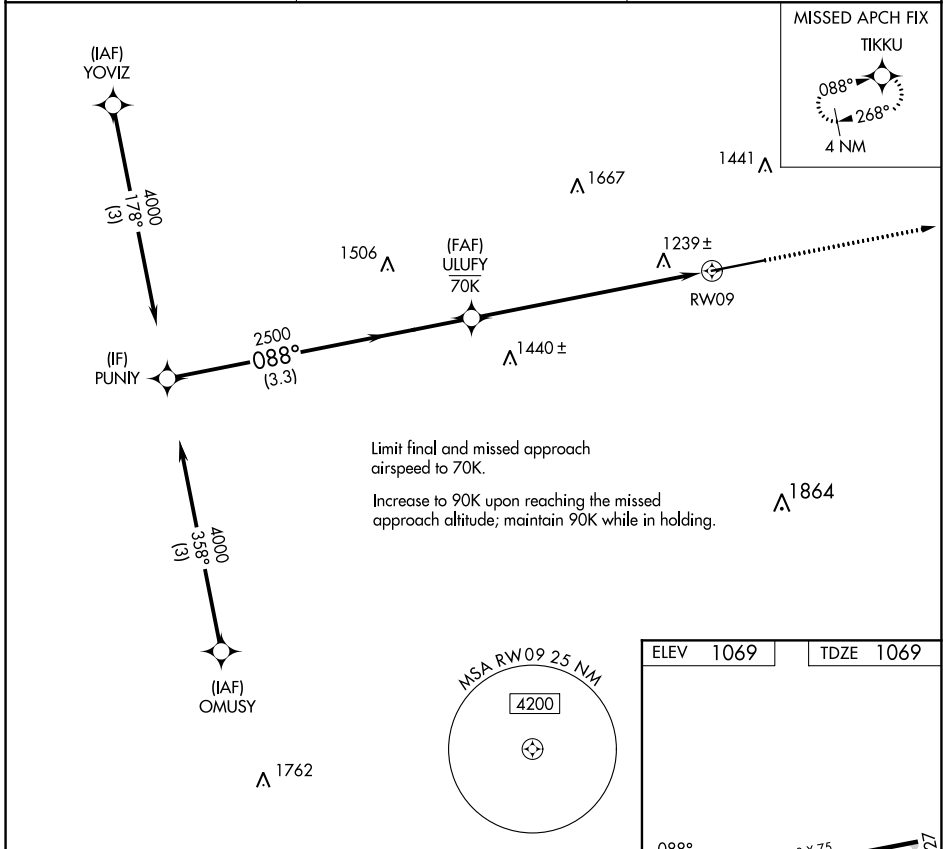
NA Use Washington altimeter setting. Procedure NA at night.

MISSED APPROACH: Climb to 4000 direct TIKKU and hold, continue climb-in-hold to 4000.

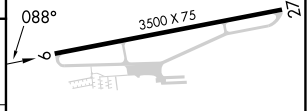
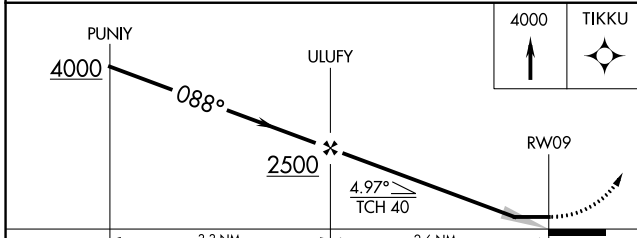
AFJ AWOS-3PT
119.175

CLARKSBURG APP CON*
121.15 284.65

UNICOM
122.8 (CTAF)



ELEV 1069	TDZE 1069
-----------	-----------



CATEGORY	COPTER	
LNAV MDA	1560-1	491 (500-1)

NE-4, 08 AUG 2024 to 05 SEP 2024

NE-4, 08 AUG 2024 to 05 SEP 2024