

WAAS CH <b>78442</b> W04A	APP CRS <b>036°</b>	Rwy Idg <b>5900</b> TDZE <b>8153</b> Apt Elev <b>8154</b>
---------------------------------	------------------------	-----------------------------------------------------------------

# RNAV (GPS) RWY 4

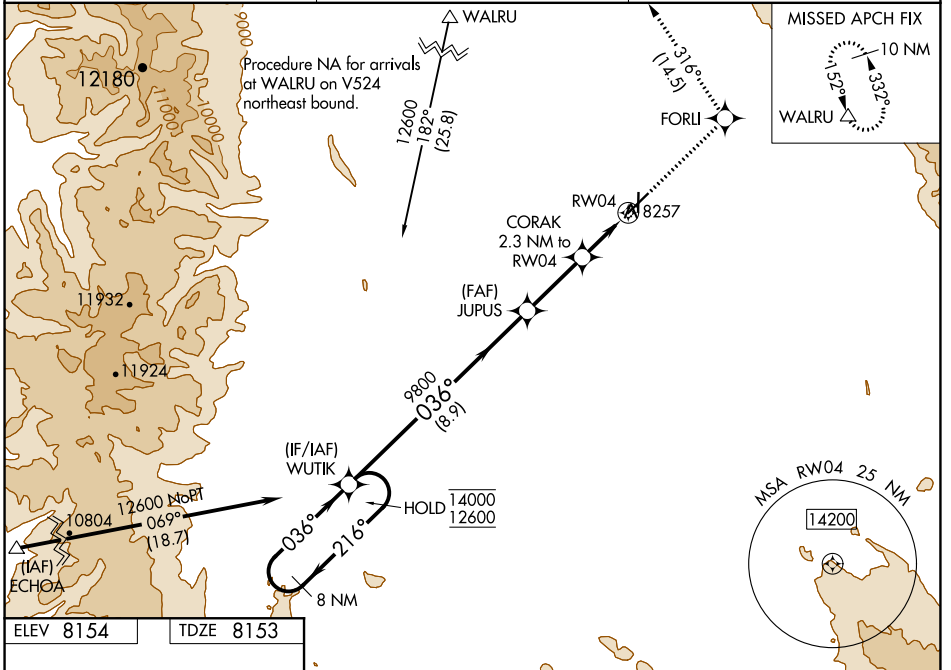
WALDEN-JACKSON COUNTY (33V)

**RNP APCH.**

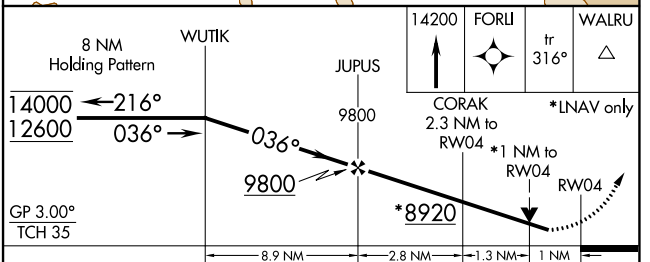
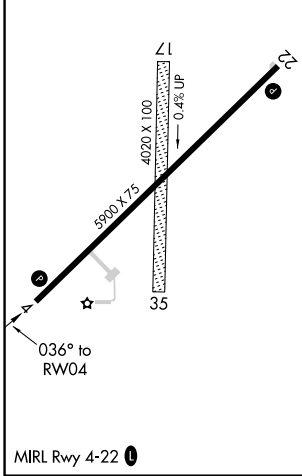
▼ Circling NA to Rwy 17 and 35. Circling NA southeast of Rwy 4-22. Rwy 4 helicopter visibility reduction below 3/4 SM NA. For uncompensated Baro-VNAV systems, LNAV/VNAV NA below -31°C or above 54°C.

**MISSED APPROACH:** (Do not exceed 200K until FORLI) Climb to 14200 direct FORLI and track 316° to WALRU and hold, continue climb-in-hold to 14200.

<b>AWOS-3</b> <b>118.625</b>	<b>DENVER CENTER</b> <b>126.5 371.85</b>	<b>CTAF</b> <b>122.9 0</b>
---------------------------------	---------------------------------------------	-------------------------------



<b>ELEV 8154</b>	<b>TDZE 8153</b>
------------------	------------------



CATEGORY	A	B	C	D
LPV DA	8403-1	250 (300-1)		NA
LNAV/VNAV DA	8407-1	254 (300-1)		NA
LNAV MDA	8520-1	367 (400-1)		NA
<b>CIRCLING</b>	8520-1 366 (400-1)	8620-1 466 (500-1)	8820-1 3/4 666 (700-1 3/4)	NA

SW-1, 31 OCT 2024 to 28 NOV 2024

SW-1, 31 OCT 2024 to 28 NOV 2024