

WAAS CH <b>82225</b> <b>W31A</b>	APP CRS <b>298°</b>	Rwy Idg TDZE Apt Elev	<b>3701</b> <b>60</b> <b>62</b>
--	------------------------	-----------------------------	---------------------------------------

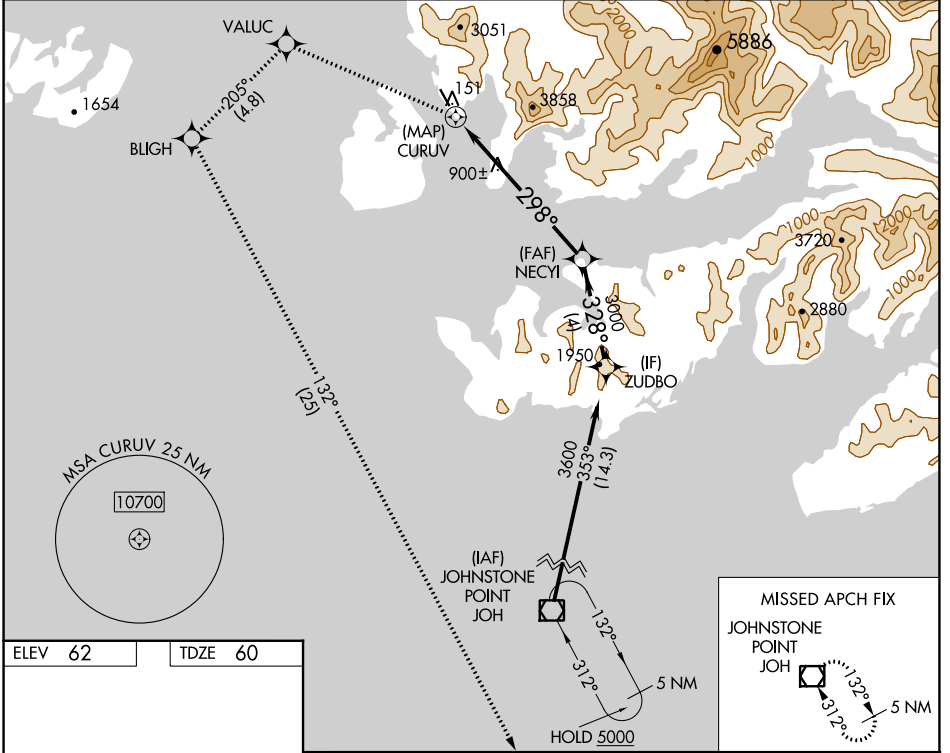
# RNAV (GPS) RWY 31

TATITLEK (7KA) (PAKA)

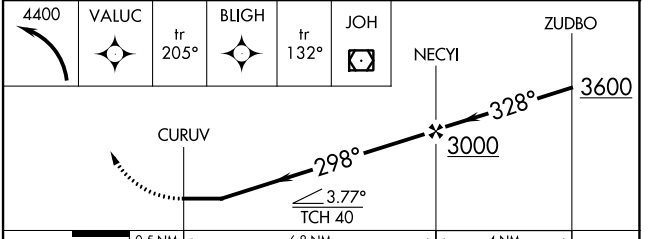
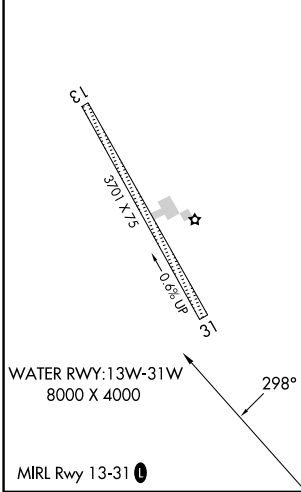
**NA** Use Valdez altimeter setting. Circling NA northeast of Rwy 31-13. DME/DME RNP-0.3 NA. Helicopter visibility reduction below 1 SM NA. Procedure NA at night.

**MISSED APPROACH:** Climbing left turn to 4400 direct VALUC and on track 205° to BLIGH and on track 132° to JOH VOR/DME and hold.

ANCHORAGE CENTER <b>119.3</b>	JUNEAU RADIO <b>122.2</b>	CTAF <b>122.7</b>
----------------------------------	------------------------------	----------------------



ELEV 62	TDZE 60
---------	---------



CATEGORY	A	B	C	D
LP MDA	1260-1¼ 1200 (1200-1¼)	1260-1½ 1200 (1200-1½)		NA
LNAV MDA	1400-1¼ 1340 (1400-1¼)	1400-1½ 1340 (1400-1½)		NA
CIRCLING	1400-1¼ 1338 (1400-1¼)	1400-1½ 1338 (1400-1½)		NA

AK, 11 JUL 2024 to 05 SEP 2024

AK, 11 JUL 2024 to 05 SEP 2024