

BORRN SIX DEPARTURE (RNAV)

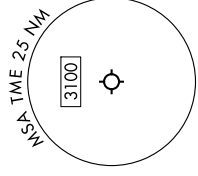
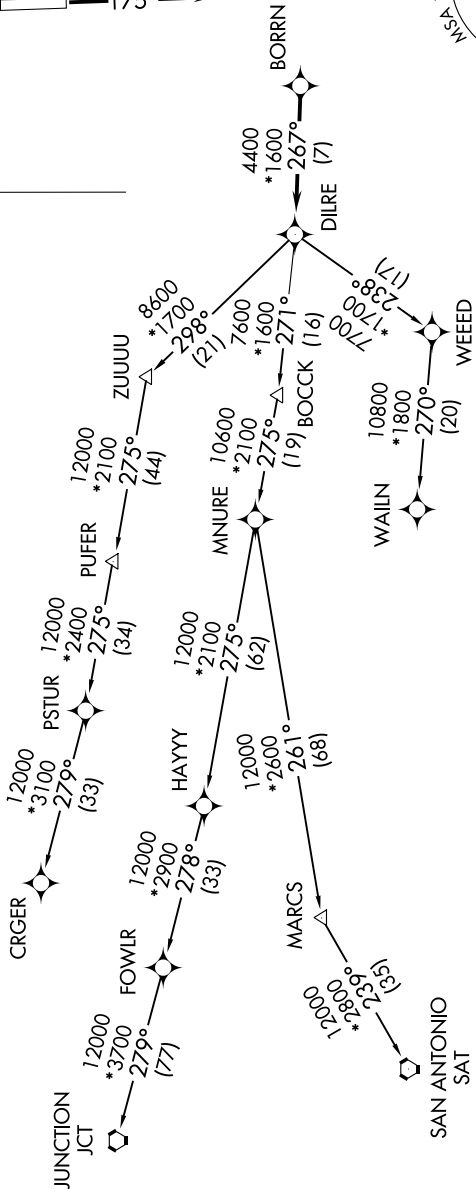
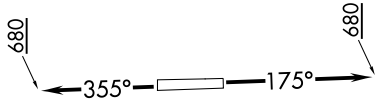
SC-5, 31 OCT 2024 to 28 NOV 2024

ATIS 119.525  
CTAF 126.975  
CLNC DEL 132.075  
HOUSTON DEP CON 123.8 257.7

**TAKEOFF MINIMUMS**  
Rwy 18, 36: Standard with minimum climb of 500'/NM to 680.

RNAV 1 - DME/DME/IRU or GPS.  
RADAR required.

**TOP ALTITUDE:  
ASSIGNED BY ATC**



**NOTE:** CRGR-TRANSITION ATC assigned only for aircraft departing 54T, AXH, EFD, GLS, HPY, IWS, LBX, LVJ, SGR, TME, T00, T41.

**NOTE:** Chart not to scale.

(NARRATIVE ON FOLLOWING PAGE)

SC-5, 31 OCT 2024 to 28 NOV 2024

BORRN SIX DEPARTURE (RNAV)