

APP CRS <b>224°</b>	Rwy Idg TDZE Apt Elev	<b>NA</b> <b>NA</b> <b>1154</b>
------------------------	-----------------------------	---------------------------------------

# RNAV (GPS)-A

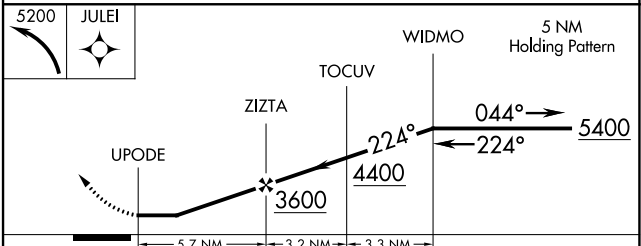
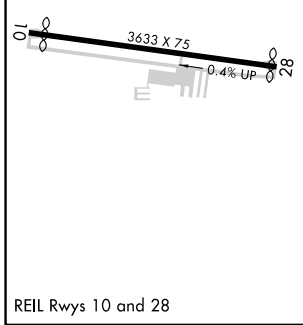
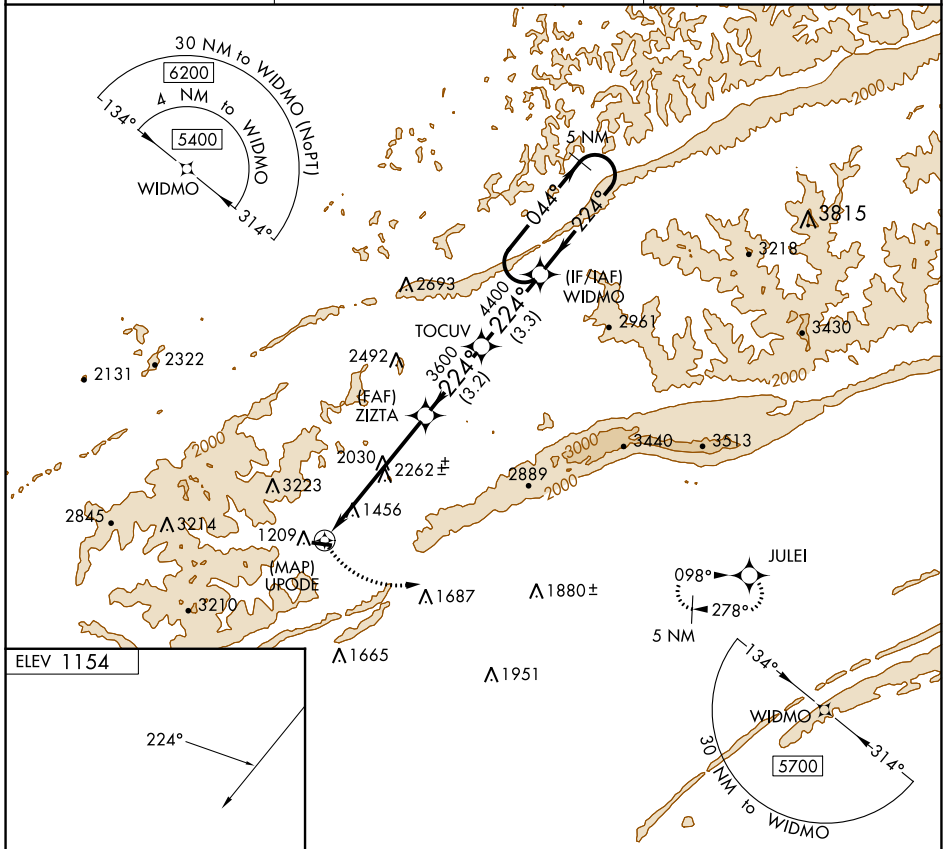
MIDDLESBORO/BELL COUNTY (1A6)

**⚠** DME/DME RNP-0.3 NA. When local altimeter setting not received, use London altimeter setting: increase all MDA 100 feet. Procedure NA at night. Helicopter visibility reduction below 1 SM NA.

**⚠** MISSED APPROACH: Climbing left turn to 5200 direct JULEI and hold.

**⚠** -14°C

AWOS-3 <b>119.425</b>	INDIANAPOLIS CENTER <b>124.625 371.925</b>	UNICOM <b>122.8 (CTAF)</b>
--------------------------	-----------------------------------------------	-------------------------------



CATEGORY	A	B	C	D
<b>Ⓢ</b> CIRCLING	2780-1¼ 1626 (1700-1¼)	3080-1½ 1926 (2000-1½)		NA

# RNAV (GPS)-A

SE-1, 08 AUG 2024 to 05 SEP 2024

SE-1, 08 AUG 2024 to 05 SEP 2024