

WAAS CH 50529 W30A	APP CRS 302°	Rwy Idg TDZE Apt Elev	3900 2247 2264
--	------------------------	-----------------------------	---

RNAV (GPS) RWY 30

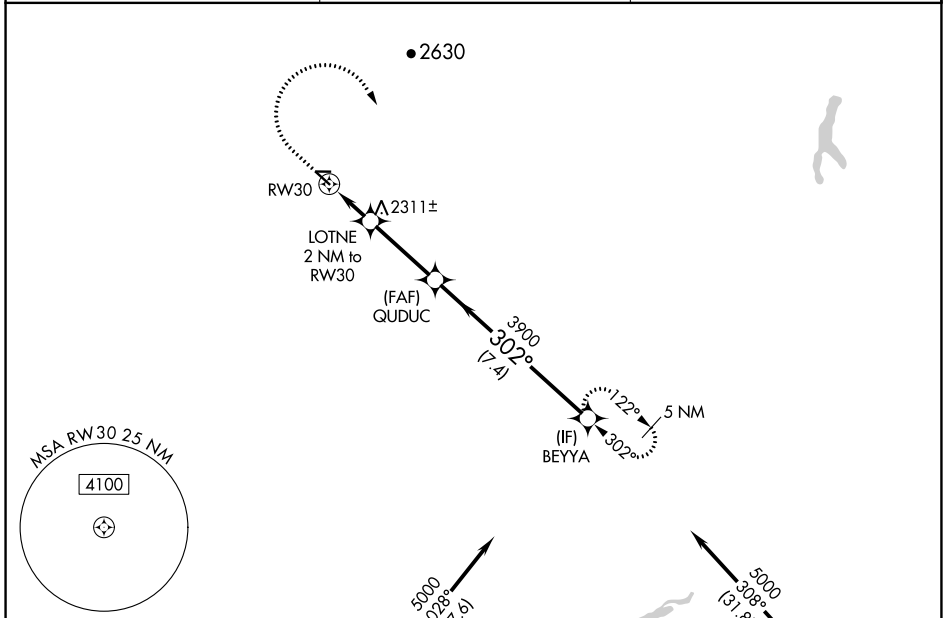
SHER-WOOD (PWD)

RNP APCH-GPS.

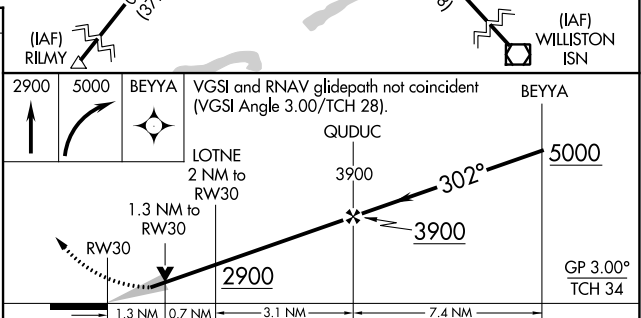
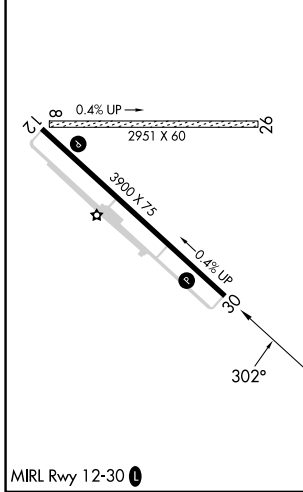
⚠ Circling Rwy 8, 26 NA at night. For uncompensated Baro-VNAV systems, LNAV/VNAV NA below -19°C or above 54°C. When local altimeter setting not received, use Williston altimeter setting.

MISSED APPROACH: Climb to 2900 then climbing right turn to 5000 direct BEYYA and hold.

AWOS-3PT 135.025	SALT LAKE CENTER 126.85 305.2	UNICOM 122.8 (CTAF) 0
----------------------------	---	---------------------------------



ELEV 2264	TDZE 2247
-----------	-----------



CATEGORY	A	B	C	D
LPV DA		2562-3/4	315 (300-3/4)	
LNAV/VNAV DA		2612-1	365 (400-1)	
LNAV MDA	2680-1	433 (500-1)	2680-1 1/4	433 (500-1 1/4)
C CIRCLING	2780-1	516 (600-1)	2880-1 3/4 616 (700-1 3/4)	3100-2 3/4 836 (900-2 3/4)

NW-1, 31 OCT 2024 to 28 NOV 2024

NW-1, 31 OCT 2024 to 28 NOV 2024