

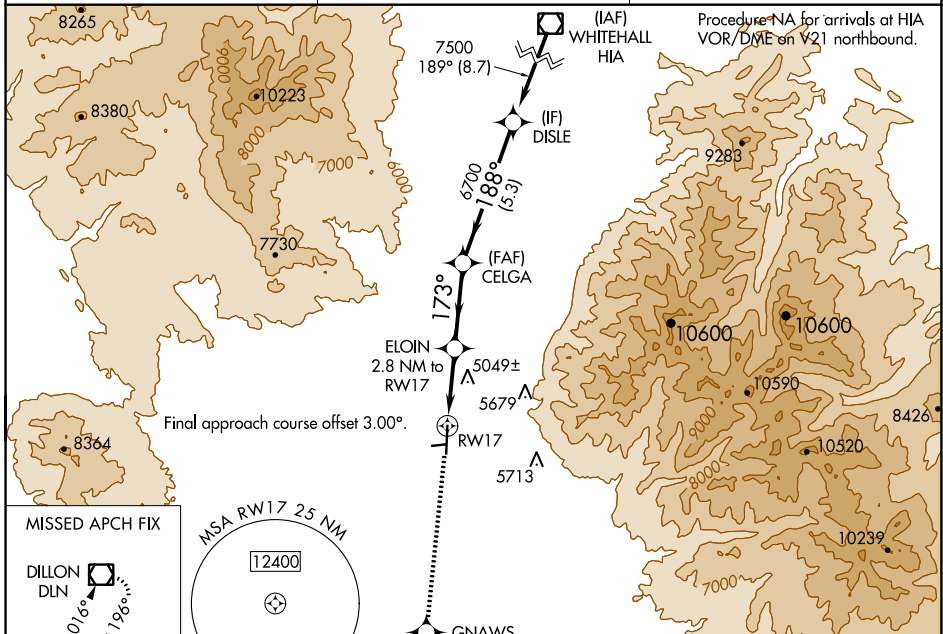
WAAS CH <b>93840</b> <b>W17A</b>	APP CRS <b>173°</b>	Rwy Idg TDZE Apt Elev	<b>6000</b> <b>4789</b> <b>4789</b>
----------------------------------------	------------------------	-----------------------------	-------------------------------------------

# RNAV (GPS) RWY 17

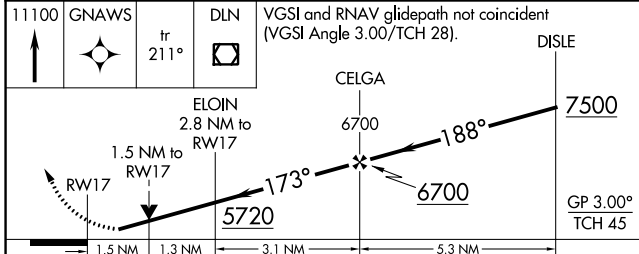
RUBY VALLEY FLD (RVF)

RNP APCH - GPS.	MISSED APPROACH: Climb to 11100 direct GNAWS and on track 211° to DLN VOR/DME and hold, continue climb-in-hold to 11100.
<p>⚠ Circling NA to Rwy 7 and 25. Circling NA east of Rwy 17-35. Rwy 17 helicopter visibility reduction below 3/4 SM NA. Baro-VNAV NA.</p>	

AWOS-3PT <b>119.025</b>	SALT LAKE CENTER <b>132.4 338.3</b>	CTAF <b>122.90</b>
----------------------------	----------------------------------------	-----------------------



MISSED APCH FIX	DILLON DLN	MSA RWY 17 25 NM	ELEV 4789	TDZE 4789
-----------------	------------	------------------	-----------	-----------



ELEV 4789	TDZE 4789
<p>173° to RWY 17</p> <p>2.0% UP</p> <p>2866 X 100</p> <p>6000 X 60</p> <p>25</p> <p>0.5% UP</p> <p>35</p>	
MIRL Rwy 17-35	

CATEGORY	A	B	C	D
LPV DA	5064-1		275 (300-1)	
LNAV/VNAV DA	5443-1 7/8		654 (700-1 7/8)	
LNAV MDA	5300-1	511 (600-1)	5300-1 3/8	511 (600-1 3/8)
CIRCLING	5300-1	511 (600-1)	5300-1 1/2	5460-2 1/4
			511 (600-1 1/2)	671 (700-2 1/4)

NW-1, 31 OCT 2024 to 28 NOV 2024

NW-1, 31 OCT 2024 to 28 NOV 2024