

APP CRS <b>196°</b>	Rwy Idg TDZE Apt Elev	<b>3815</b> <b>1276</b> <b>1276</b>
------------------------	-----------------------------	---

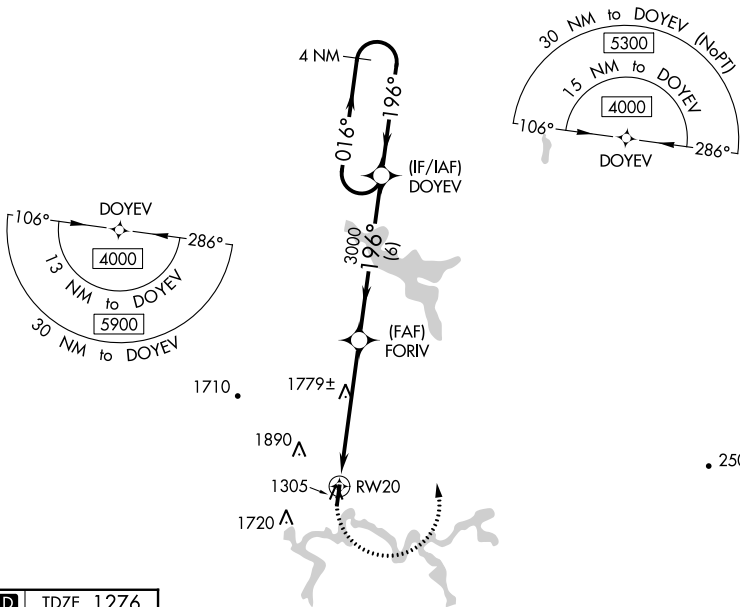
# RNAV (GPS) RWY 20

BRAXTON COUNTY (48I)

**▼** DME/DME RNP-0.3 NA. Procedure NA at night. Helicopter visibility reduction below 1 SM NA.  
**▲ NA** When local altimeter setting not received, use Clarksburg altimeter setting and increase all MDA 260 feet. Increase LNAV Cat A/B visibility ¼ mile, LNAV Cat C visibility ½ mile, and Circling Cat A visibility ¼ mile.

**MISSED APPROACH:** Climbing left turn to 4000 direct DOYEV and hold.

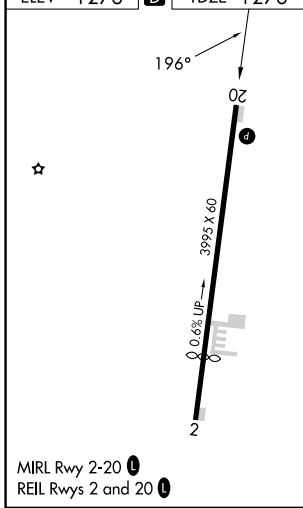
AWOS-3P <b>118.225</b>	CLARKSBURG APP CON ★ <b>121.15 284.65</b>	CTAF <b>122.9 0</b>
---------------------------	--	------------------------



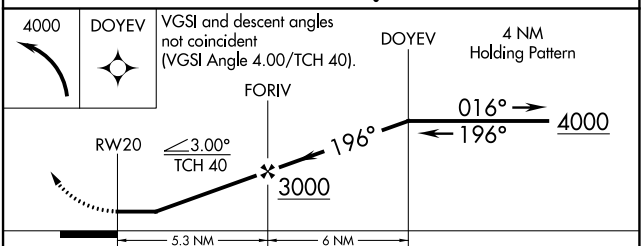
NE-4, 08 AUG 2024 to 05 SEP 2024

NE-4, 08 AUG 2024 to 05 SEP 2024

ELEV 1276	<b>D</b>	TDZE 1276
-----------	----------	-----------



MIRL Rwy 2-20 **0**  
 REIL Rwy 2 and 20 **0**



CATEGORY	A	B	C	D
LNAV MDA	2060-1 784 (800-1)	2060-1 ¼ 784 (800-1 ¼)	2060-2 ½ 784 (800-2 ½)	NA
<b>C</b> CIRCLING	2060-1 784 (800-1)	2240-1 ½ 964 (1000-1 ½)	2240-3 964 (1000-3)	NA