

|  |                        |                             |   |
|--|------------------------|-----------------------------|---|
| WAAS<br>CH <b>82039</b><br><b>W13A</b> | APP CRS<br><b>132°</b> | Rwy Idg<br>TDZE<br>Apt Elev | <b>5500</b><br><b>4227</b><br><b>4264</b> |
|--|------------------------|-----------------------------|---|

# RNAV (GPS) RWY 13

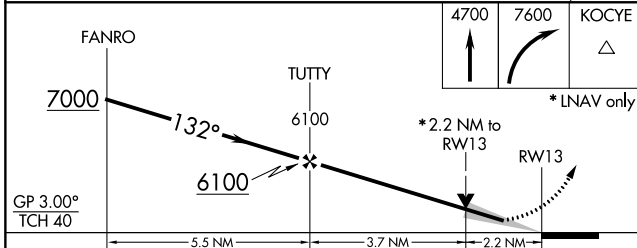
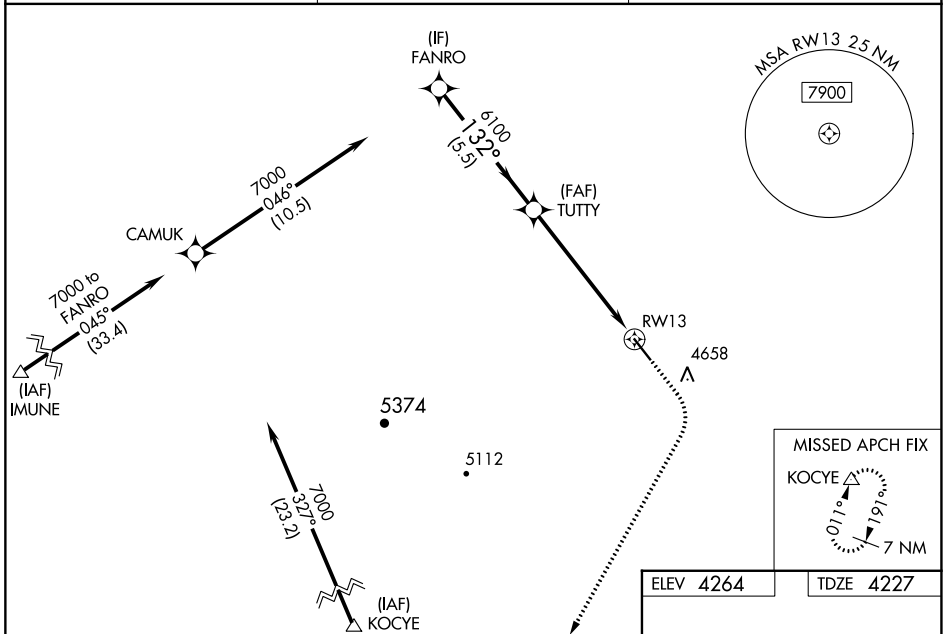
HULETT MUNI (W43)

**RNP APCH.**

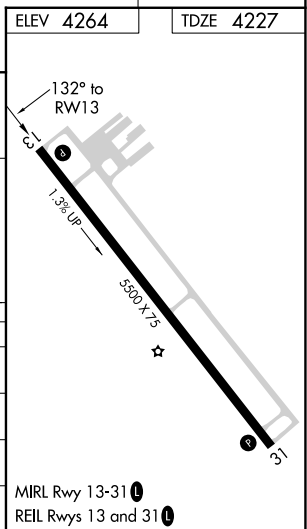
**⚠** For uncompensated Baro-VNAV systems, procedure NA below -23°C or above 53°C. Procedure NA at night. Baro-VNAV and VDP NA when using Gillette altimeter setting. When local altimeter setting not received, use Gillette altimeter setting and increase LPV DA to 4662 feet; LNAV/VNAV DA to 4807 feet, and all visibilities ½ SM. Increase all MDA 120 feet and LNAV Cat C/D visibility ½ SM, Circling Cat A/B ¼ SM, and Cat C ½ SM.

**MISSED APPROACH:**  
Climb to 4700 then climbing right turn to 7600 direct KOCYE and hold.

|                            |                                      |  |
|----------------------------|--------------------------------------|--|
| AWOS-3PT<br><b>128.775</b> | DENVER CENTER<br><b>127.95 338.2</b> | UNICOM<br><b>122.8 (CTAF)</b> <b>📻</b> |
|----------------------------|--------------------------------------|--|



| CATEGORY          | A                     | B                       | C                       | D                       |
|-------------------|-----------------------|-------------------------|-------------------------|-------------------------|
| LPV DA            |                       | 4542-1½                 | 315 (300-1½)            |                         |
| LNAV/VNAV DA      |                       | 4687-1¾                 | 460 (500-1¾)            |                         |
| LNAV MDA          | 5100-1<br>873 (900-1) | 5100-1¼<br>873 (900-1¼) | 5100-2½                 | 873 (900-2½)            |
| <b>C</b> CIRCLING | 5100-1<br>836 (900-1) | 5100-1¼<br>836 (900-1¼) | 5100-2½<br>836 (900-2½) | 5400-3<br>1136 (1200-3) |



NW-1, 31 OCT 2024 to 28 NOV 2024

NW-1, 31 OCT 2024 to 28 NOV 2024