

WAAS CH <b>81928</b> <b>W30A</b>	APP CRS <b>301°</b>	Rwy Idg TDZE Apt Elev	<b>2990</b> <b>37</b> <b>38</b>
----------------------------------------	------------------------	-----------------------------	---------------------------------------

# RNAV (GPS) RWY 30

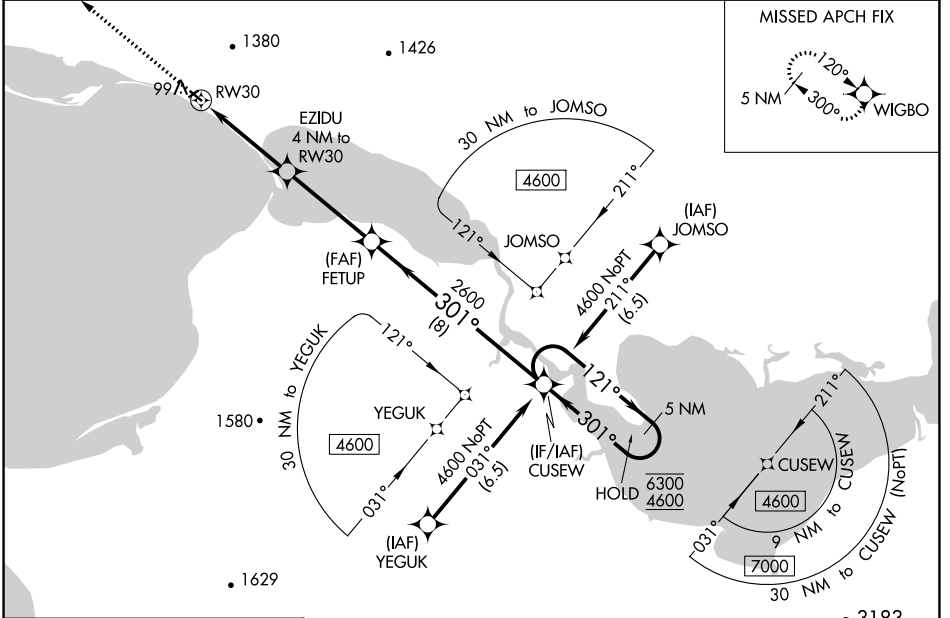
BREVIG MISSION (KTS) (PFKT)

RNP APCH.

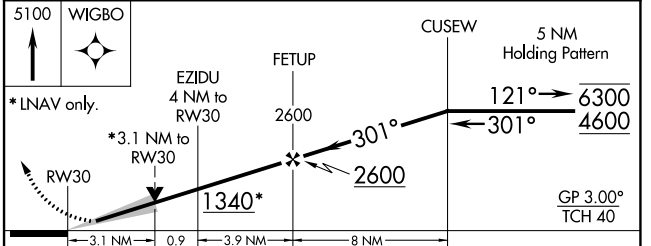
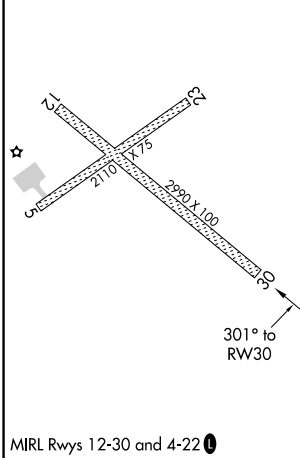
**⚠** Circling NA north of Rwy 12 and 23. Circling Rwy 23 NA at night.  
**⚠** For uncompensated Baro-VNAV systems, LNAV/VNAV NA below -25° C or above 54° C.

MISSED APPROACH: Climb to 5100 direct WIGBO and hold, continue climb-in-hold to 5100.

AWOS-3P <b>121.55</b>	ANCHORAGE CENTER <b>133.3 290.4</b>	NOME RADIO <b>135.6</b>	CTAF <b>123.0</b>
--------------------------	----------------------------------------	----------------------------	----------------------



ELEV 38	TDZE 37
---------	---------



CATEGORY	A	B	C	D
LPV DA	287-1¼ 250 (300-1¼)	287-1	250 (300-1)	NA
LNAV/VNAV DA	960-4 923 (1000-4)			NA
LNAV MDA	1080-1¼ 1043 (1100-1¼)	1080-1½ 1043 (1100-1½)	1080-3 1043 (1100-3)	NA
<b>C</b> CIRCLING	1080-1¼ 1042 (1100-1¼)	1460-2½ 1422 (1500-2½)	1580-3 1542 (1600-3)	NA

AK, 31 OCT 2024 to 26 DEC 2024

AK, 31 OCT 2024 to 26 DEC 2024