

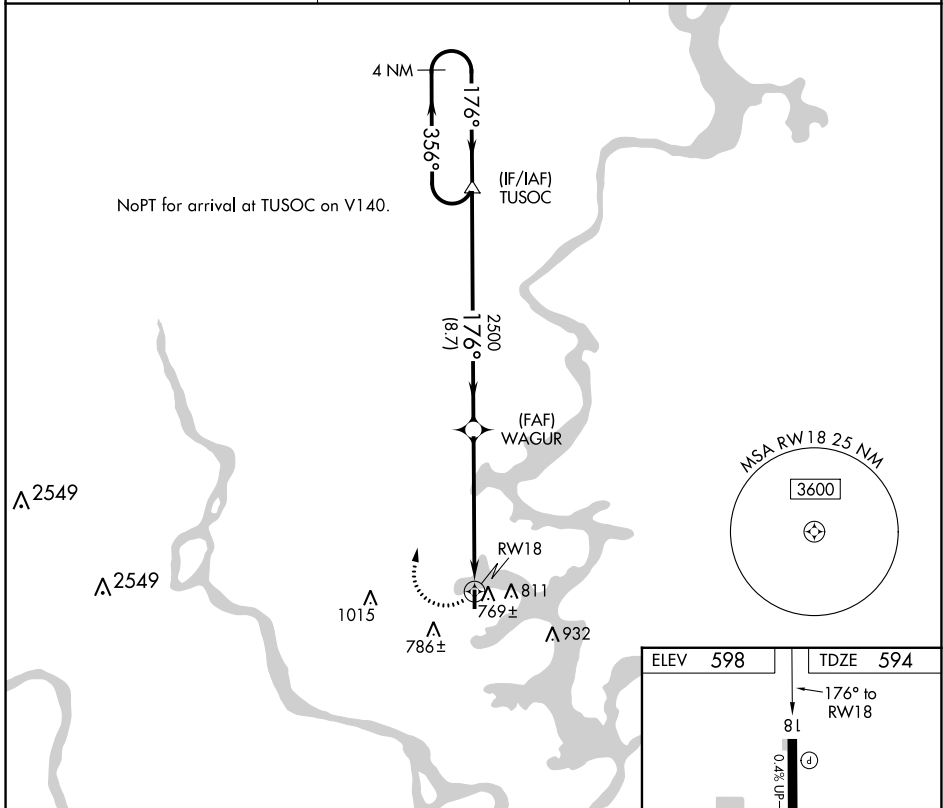
APP CRS <b>176°</b>	Rwy Idg <b>3401</b>
	TDZE <b>594</b>
	Apt Elev <b>598</b>

# RNAV (GPS) RWY 18

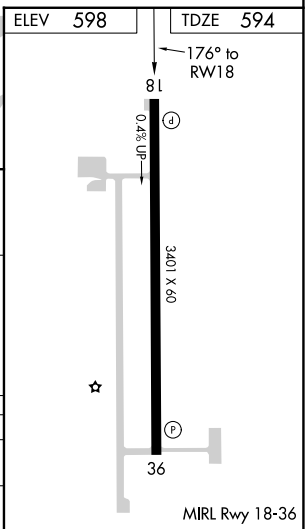
HEFNER-EASLEY (H68)

RNP APCH.	Procedure NA at night. Use Pryor altimeter setting.	MISSED APPROACH: Climbing right turn to 2500 direct TUSOC and hold.
-----------	--	---

H71 AWOS-3PT <b>120.1</b>	TULSA APP CON <b>119.1 360.825</b>	CTAF <b>122.9</b>
------------------------------	---------------------------------------	----------------------



	4 NM Holding Pattern	TUSOC	WAGUR	2500 TUSOC
	← 356°	176° →	176° →	2500
	2500		2500	
			3.05° TCH 37	RW18
		8.7 NM	5.8 NM	
CATEGORY	A	B	C	D
RNAV MDA	1080-1	486 (500-1)		NA
CIRCLING	1180-1	582 (600-1)		NA



SC-1, 03 OCT 2024 to 31 OCT 2024

SC-1, 03 OCT 2024 to 31 OCT 2024