

WAAS CH 82341 W31A	APP CRS 313°	Rwy Idg TDZE Apt Elev	3800 1885 1885
--	------------------------	-----------------------------	---

RNAV (GPS) RWY 31

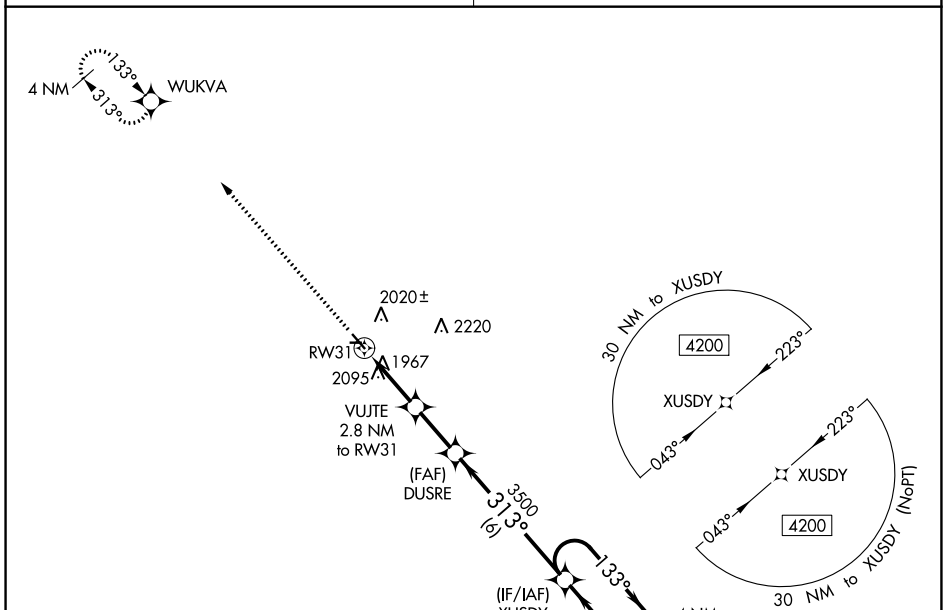
ONIDA MUNI (98D)

▽ DME/DME RNP-0.3 NA. VDP NA when using Pierre altimeter setting. When local altimeter setting not received, use Pierre altimeter setting: increase all MDAs 80 feet and LP Cat C visibility 1/8 SM and LNAV and Circling Cat C visibility 1/4 SM.

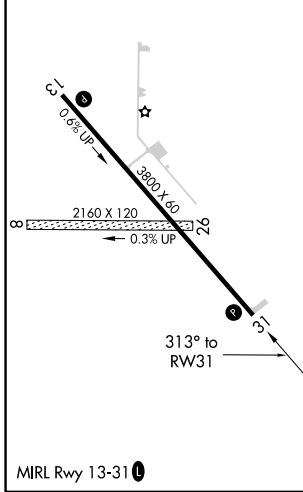
▲ NA

MISSED APPROACH: Climb to 4100 direct WUKVA and hold.

AWOS-2 122.9 (CTAF) 0	MINNEAPOLIS CENTER 125.1 269.1
---------------------------------	--



ELEV 1885	TDZE 1885
-----------	-----------



4100	WUKVA	VUJTE 2.8 NM to RWY 31	DUSRE	XUSDY	4200	4 NM Holding Pattern
		1 NM to RWY 31	3.00° TCH 31	3500	133°	← 313° →
		1 NM	1.8	2.2 NM	6 NM	
CATEGORY	A	B	C	D		
LP MDA	2220-1 335 (400-1)			NA		
LNAV MDA	2360-1	475 (500-1)	2360-1 3/8 475 (500-1 3/8)	NA		
C CIRCLING	2400-1	515 (600-1)	2520-1 3/4 635 (700-1 3/4)	NA		

NC-1, 08 AUG 2024 to 05 SEP 2024

NC-1, 08 AUG 2024 to 05 SEP 2024