

WAAS CH 93715 W36A	APP CRS 001°	Rwy Ldg 5002 TDZE 835 Apt Elev 845
--	------------------------	---

RNAV (GPS) RWY 36

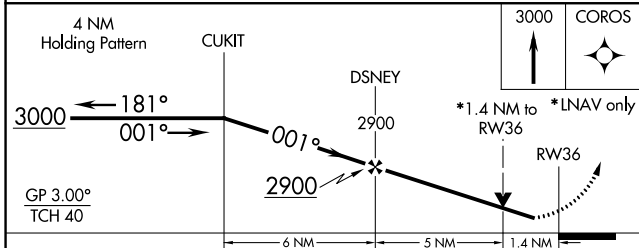
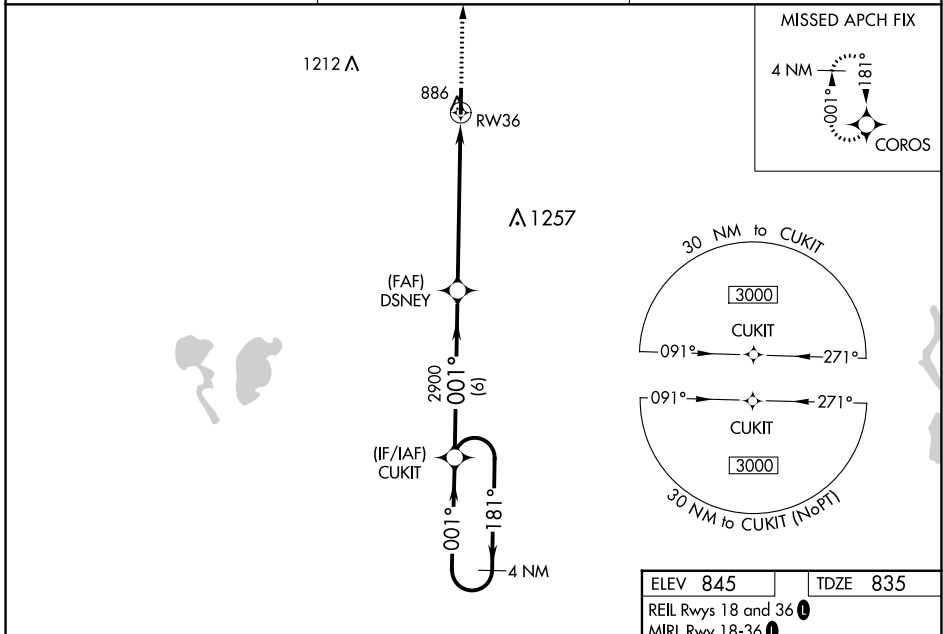
NORTH CENTRAL MISSOURI RGNL (M08)

RNP APCH.

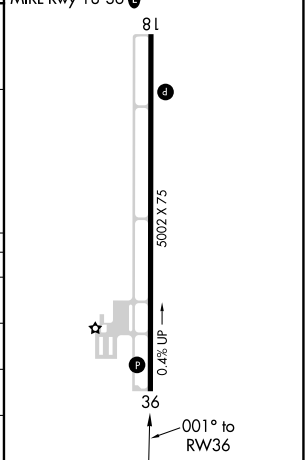
▼ **NA** For uncompensated Baro-VNAV systems, LNAV/VNAV NA below -16°C or above 54°C. Baro-VNAV and VDP NA when using Kirksville altimeter setting. When local altimeter setting not received, use Kirksville altimeter setting and increase all LPV and LNAV/VNAV DA to 1169 feet and increase all visibility 1/8 mile; increase all MDA 100 feet, increase LNAV Cat C/D visibility 1/4 mile, and Circling Cat C visibility 1/8 mile. Rwy 36 helicopter visibility reduction below 3/4 SM NA.

MISSED APPROACH: Climb to 3000 direct COROS and hold.

AWOS-2 118.425	KANSAS CITY CENTER 125.25 235.975	CTAF 122.9 0
--------------------------	---	-------------------------------



ELEV 845	TDZE 835
REIL Rwy 18 and 36 0	
MIRL Rwy 18-36 0	



CATEGORY	A	B	C	D
LPV DA		1085-1	250 (300-1)	
LNAV/VNAV DA		1085-1	250 (300-1)	
LNAV MDA	1300-1	465 (500-1)	1300-1 3/8	465 (500-1 3/8)
C CIRCLING	1300-1	455 (500-1)	1300-1 1/2	1400-2
			455 (500-1 1/2)	555 (600-2)

NC-3, 31 OCT 2024 to 28 NOV 2024

NC-3, 31 OCT 2024 to 28 NOV 2024