

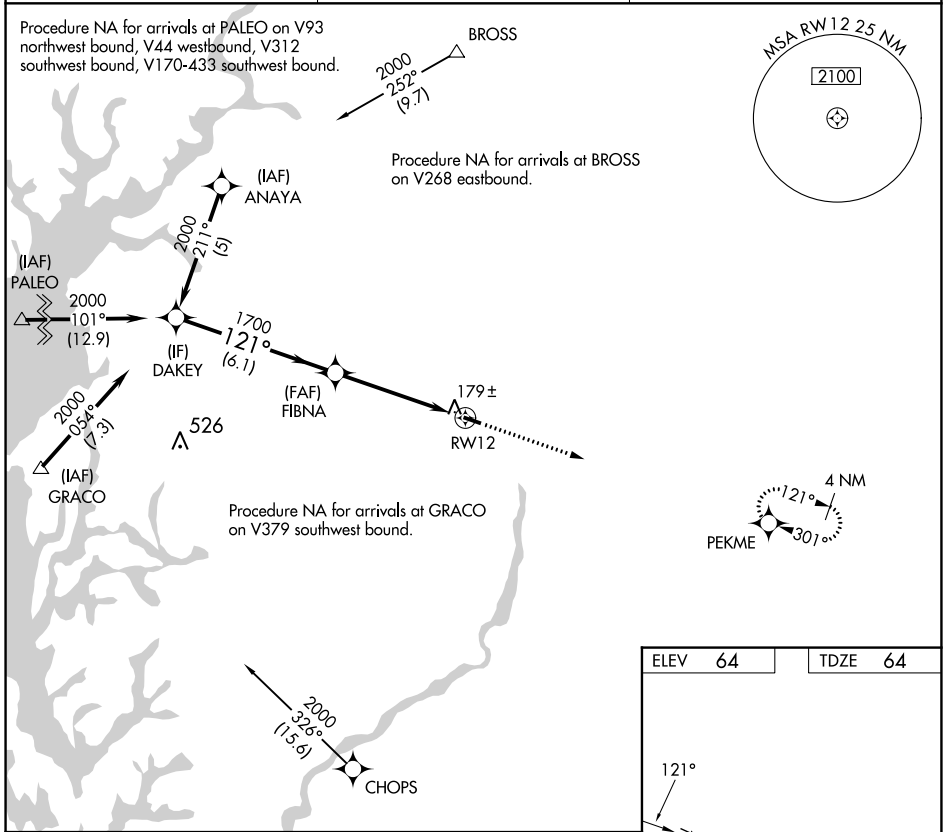
APP CRS	Rwy Idg	<b>3214</b>
<b>121°</b>	TDZE	<b>64</b>
	Apt Elev	<b>64</b>

# RNAV (GPS) RWY 12

GOODEN AIRPARK (RJD)

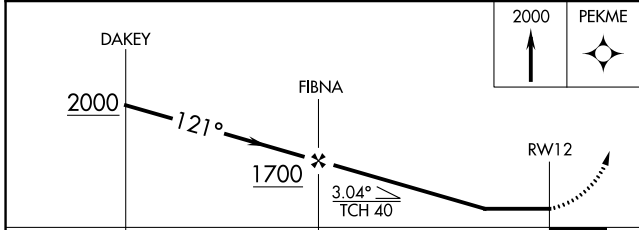
RNP APCH - GPS.	<p>Procedure NA at night. Use Easton altimeter setting: when not received, procedure NA. Rwy 12 helicopter visibility reduction below 1 SM NA.</p>	MISSED APPROACH: Climb to 2000 direct PEKME and hold.
-----------------	--	---

ESN AWOS-3PT <b>124.475</b>	POTOMAC APP CON <b>124.55 317.425</b>	UNICOM <b>122.8 (CTAF) 0</b>
--------------------------------	--	---------------------------------



NE-3, 31 OCT 2024 to 28 NOV 2024

NE-3, 31 OCT 2024 to 28 NOV 2024



ELEV 64	TDZE 64
---------	---------

LIRL Rwy 12-30 0  
REIL Rws 12 and 30 0

CATEGORY	A	B	C	D
LNAV MDA	480-1	416 (500-1)		NA
CIRCLING	520-1	456 (500-1)		NA