

WAAS CH 86721 W20A	APP CRS 199°	Rwy Idg TDZE Apt Elev	4000 958 959
---------------------------------	------------------------	-----------------------------	---

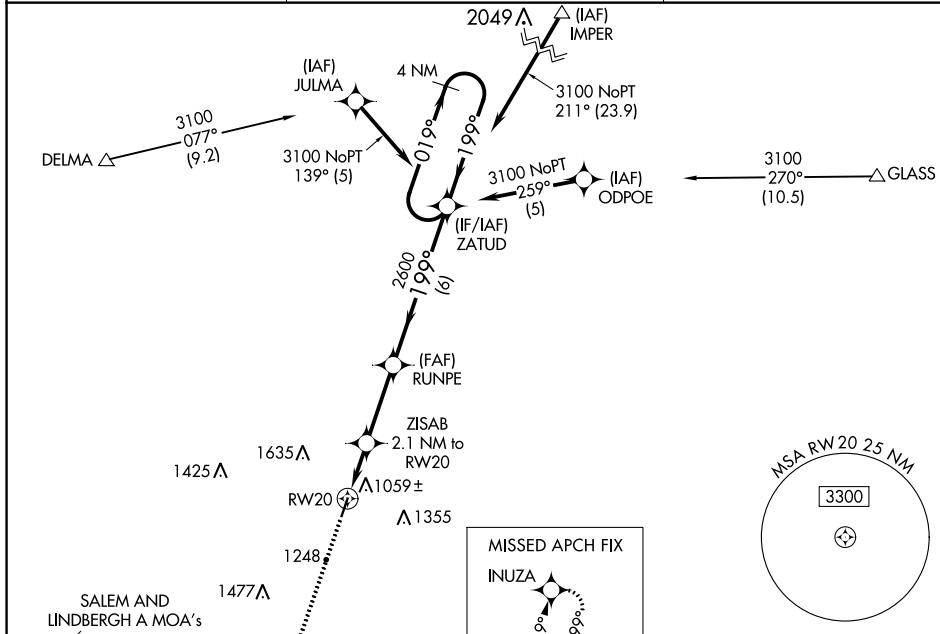
RNAV (GPS) RWY 20

WASHINGTON COUNTY (8WC)

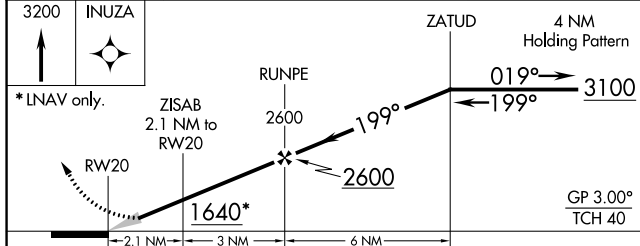
Baro-VNAV NA. DME/DME RNP-0.3 NA. Use Farmington altimeter setting, when not received, use Rolla NH altimeter setting and increase all DA/MDA 100 feet; increase LPV Cats A/B visibility 3/8 mile and increase LNAV/VNAV Cts A/B 1/4 mile. Circling NA west of Rwy 2-20.

MISSED APPROACH: Climb to 3200 direct INUZA and hold.

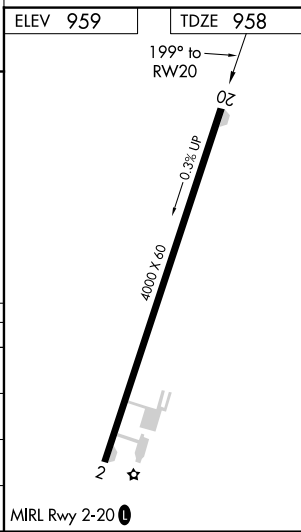
FAM AWOS-3PT 119.275	KANSAS CITY CENTER 128.35 284.675	UNICOM 123.0 (CTAF)
--------------------------------	---	-------------------------------



ELEV 959	TDZE 958
----------	----------



CATEGORY	A	B	C	D
LPV DA	1253-1	295 (300-1)		NA
LNAV / VNAV DA	1278-1 1/8	320 (400-1 1/8)		NA
LNAV MDA	1360-1	402 (500-1)		NA
CIRCLING	1580-1 621 (700-1)	1600-1 641 (700-1)		NA



NC-3, 03 OCT 2024 to 31 OCT 2024

NC-3, 03 OCT 2024 to 31 OCT 2024